



# ND8321

## Standalone Desktop NVR

8-CH · 2-Bay HDD · Auto Setup · Auto Adaptive Stream · Hardware Decoding

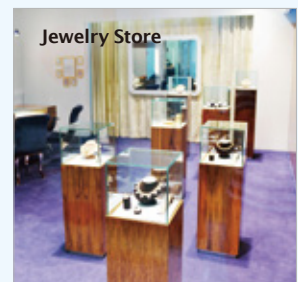
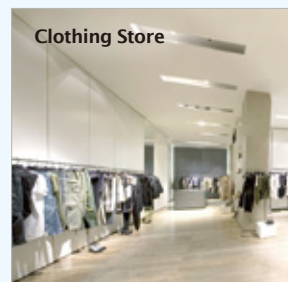
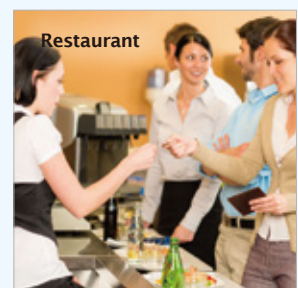
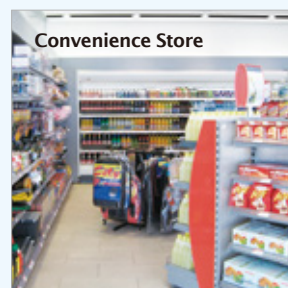
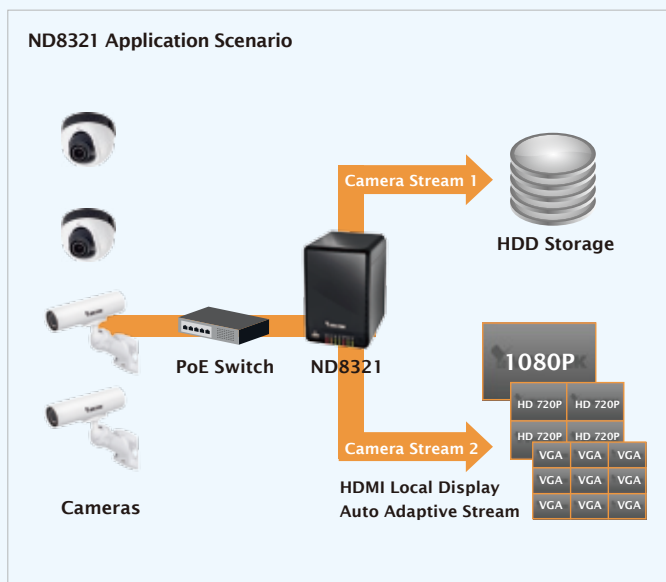
VIVOTEK ND8321 is a compact Linux embedded 8-CH standalone desktop NVR designed for any small-scale video surveillance installation. ND8321 achieves non-screwdriver installation, and facilitates "One Button Setup" with its plug & play and auto setup functionality.

Supporting Full HD HDMI local video output, users can control the GUI OSD interface via mouse & keyboard, eliminating the need for a separate PC to view video or to playback from the NVR. The new local display design - Auto Adaptive Stream will dynamically modify Stream 2 resolution of a camera to best fit the display resolution according to the layout type, performing an efficient display. Fisheye dewarp is also designed in ND8321. ND8321 supports software dewarp of VIVOTEK fisheye cameras, allowing seamless display in a fisheye surveillance scenario.

Together with VAST CMS and ST7501 VMS, users can set up an easy-to-use IP surveillance system with ease. VIVOTEK also provides the mobile application, iViewer, for both iOS and Android handheld devices, enabling users to monitor live video anytime, anywhere.

### Key Features

- 8-CH Live Viewing
- 1-CH Local Playback, 4-CH Remote Synchronous Playback
- Embedded Linux OS
- Easy to Install HDD Design
- 1080P HDMI Local Video Output
- Plug & Play Auto Setup
- Auto Adaptive Stream for Efficient Display
- Support Fisheye Dewarp (10, 1P, 1R, 103R)
- Support Local Rewind
- VIVOTEK Camera Configuration Integrated

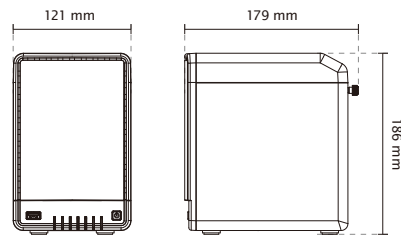


## Hardware Information

<b>Model</b>	ND8321	<b>Power</b>	
<b>System</b>		<b>Power Input</b>	DC 12V 5A
<b>OS</b>	Embedded Linux	<b>Power Consumption (W)</b>	Max. 60 W
<b>CPU</b>	ARM Processor	<b>LED Indicator</b>	
<b>Flash</b>	256 MB	<b>LED Indicator</b>	Power, Status, LAN, HDD1, HDD2, Alarm, Record
<b>RAM</b>	1 GB	<b>Mechanic</b>	
<b>Watchdog</b>	Hardware + Software	<b>Form Factor</b>	Tower
<b>Power Restoration</b>	System restart automatically after Power Recovery	<b>Operation Buttons</b>	Power (Front) / Reset (Back)
<b>Storage</b>		<b>Dimensions</b>	121 mm (W) x 179 mm (D) x 186 mm (H)
<b>HDD Devices</b>	Internal tray x 2	<b>Weight</b>	0.92 kg
<b>HDD Max. Capacity</b>	8 TB (4 TB x 2)	<b>Operating Temperature</b>	0 ~ 40 °C
<b>Disk Management</b>	Create, Format and Remove Disk HDD S.M.A.R.T	<b>Humidity</b>	0 ~ 95%
<b>Video</b>		<b>General</b>	
<b>Video Output</b>	HDMI	<b>Safety Certifications</b>	CE, LVD, FCC Class B, VCCI, C-Tick
<b>Resolution</b>	1920x1080	<b>Warranty</b>	24 months
<b>Graphics Decoder</b>	Hardware decoding	<b>System Requirements</b>	
<b>Decoding Capacity</b>	H.264: 1920x1080 @ 30 fps (1-CH) 1280x720 @ 120 fps (4-CH) 640x480 @ 240 fps (8-CH)	<b>Operating System</b>	Microsoft Windows OS: XP/Vista/7/8/2008/2012
<b>Camera Position</b>	Change the viewcell position	<b>CPU</b>	Intel Celeron or above
<b>External I/O</b>		<b>Memory</b>	2 GB or above
<b>USB</b>	Front: 1 (USB 2.0) Back: 1 (USB 2.0)	<b>Ethernet</b>	10/100Mbps
<b>Network</b>		<b>Display Resolution</b>	1024 x 768 pixels or above
<b>Protocols</b>	IPv4, TCP/IP, HTTP, HTTPS, UPnP, RTSP/RTMP/RTCP, SMTP, FTP, DHCP, NTP, DNS, DDNS, IP Filter	<b>Web Browser</b>	Internet Explorer 10 (32 bit) or above
<b>Interface</b>	1 x 10/100/1000Mbps	<b>Software AP</b>	Installation Wizard 2, ST7501, VAST
<b>Transform Gateway</b>	Supported	<b>Mobile APP, Tablet APP</b>	iViewer (iOS) iViewer (Android)
		<b>Accessories</b>	
		<b>CD</b>	User's Manual, Quick Installation Guide (QIG), Installation Wizard 2, ST7501
		<b>Others</b>	Power Adapter, Power Cord, Quick installation guide, Warranty card, H.D.D. Screws x 4, H.D.D. Brackets x 2, USB Mouse

## Software Information

<b>Record</b>		<b>Alarm Management</b>	
<b>Maximum Channel</b>	8	<b>Schedule Type</b>	Continuous, Schedule, Manual
<b>Record throughput (MB)</b>	32 Mbps	<b>Event</b>	Motion Detecton, PIR Detection, Tampering Detection, Digital Input (Camera), Digital Output (Camera), Connection Abnormal, Storage Abnormal, Storage Full
<b>Network throughput (MB)</b>	8 Mbps	<b>Action</b>	Record, Email (Text), Email (Snapshot), FTP, Digital Output (Camera), Buzzer, PTZ Control (Go to Preset)
<b>Audio Format</b>	G.711, G.726, AMR, AAC	<b>Recording Time (sec.)</b>	Pre-Record: 5 (max. 10), Post-Record: 20 (max. 300)
<b>Video Format</b>	MPEG, H.264 AVC	<b>Backup</b>	
<b>Video Resolution</b>	VGA, 1MP, 2MP All Device & 3MP Fisheye Camera	<b>Manual</b>	USB Dongle (FAT Format)
<b>Recording Time (sec.)</b>	Pre-Record: 5 (max. 10) Post-Record: 20 (max. 300)	<b>System</b>	
<b>Recording Stream</b>	Single	<b>User Management</b>	User Account: 10 User Account Time Limit: 10 mins User Level: Administrator / Regular User User Feature Definition: By Camera
<b>Recording Mode</b>	Continuous, Schedule, Manual, Event, Activity Adaptive Streaming	<b>Log</b>	System, Recording, User, Error
<b>Recording Setting</b>	Recycle (unit: Day)	<b>Date&amp;Time</b>	Time Zone, Manual, Automatic Sync NTP, Daylight Saving Time, Smart FAN Speed
<b>Recording Path</b>	Local Path	<b>Firmware</b>	Manual update
<b>Record Video Format</b>	3GP	<b>Refaul Default</b>	Supported
<b>LiveView (Local Display)</b>		<b>Backup/Restore (Configuration)</b>	Supported
<b>Stream Application</b>	Auto Adaptive Stream	<b>Language</b>	Czech, English, French, German, Italian, Japanese, Portuguese, Russian, Spanish, Simplified Chinese, Traditional Chinese
<b>LiveView Display</b>	8 Channel Multi Layout display: 1x1, 1x3 (Corridor Format), 2x2, 3x3, 1+5, 1+3, 1+1+3 (1P), 1+3+3 (1P)	<b>Camera Intergration</b>	
<b>Monitor Enhancement</b>	OSD Display (NVR), OSD Display (Camera), Camera Information, Remote I/O Control, Event Notification, Aspect Ratio Fisheye Dewarp: 10, 1P, 1R, 1O3R, PIP Control	<b>Insert Camera</b>	Manual, Search
<b>PTZ Control</b>	Panel Control	<b>Video (Media) Setting</b>	Compression, Resolution, FPS, Video Quality
<b>PTZ Operation</b>	Direction Control, Home, Iris, Preset, Patrol (Group)	<b>Image Setting</b>	Image Display Image Adjustment
<b>Snapshot</b>	JPEG	<b>PTZ Control</b>	Panel Control
<b>Video Clip Export</b>	EXE	<b>PTZ Operation</b>	Direction Control, Home, Preset, Patrol (Group)
<b>Playback (Local Display)</b>		<b>Motion Detection</b>	Supported
<b>Playback Display</b>	1 Channel Layout display: 1x1	<b>Activity Adaptive Stream</b>	Supported
<b>Playback Control</b>	Regular (Play, Pause, Stop), Rewind, Next / Previous Frame, Speed Control	<b>Device Intergration</b>	
<b>Search Mode</b>	Calendar, Event, Timeline, Timeline Scale, Stortboard	<b>UPS</b>	APC Model Compatible
<b>Monitor Enhancement</b>	OSD Display (Camera), Event Notification, Aspect Ratio, Fisheye Dewarp: 10, 1P, 1R, 1O3R, PIP Control	<b>Dimensions</b>	
<b>Snapshot</b>	JPEG		
<b>Video Clip Export</b>	EXE		
<b>LiveView (Remote)</b>			
<b>Stream Application</b>	Stream Selection		
<b>Audio Capability</b>	One Way		
<b>LiveView Display</b>	8 Channel Multi Layout display: 1x1, 2x2, 3x3, 1+3, 1+5		
<b>Monitor Enhancement</b>	OSD Display (NVR), Drag & Drop, Image Freeze, Audio Control, Remote I/O Control, Event Notification, Bookmark Fisheye Dewarp: 10, 1P, 1R, PIP Control		
<b>PTZ Control</b>	Panel Control		
<b>PTZ Operation</b>	Direction Control, Home, Zoom, Focus, Iris, Preset, Patrol (Group)		
<b>Snapshot</b>	JPEG		
<b>Video Clip Export</b>	EXE		
<b>Playback (Remote)</b>			
<b>Playback Display</b>	4 Channel Multi Layout display: 1x1, 2x2, 1+3		
<b>Playback Control</b>	Regular (Play, Pause, Stop), Next Frame, Speed Control		
<b>Search Mode</b>	Calendar, Timeline, Timeline Scale, Bookmark		
<b>Monitor Enhancement</b>	OSD Display (NVR), Drag & Drop, Audio Control, Fisheye Dewarp: 10,1P,1R, PIP Control		
<b>Snapshot</b>	JPEG		
<b>Video Clip Export</b>	EXE		



All specifications are subject to change without notice. Copyright © VIVOTEK INC. All rights reserved.

Distributed by:



**VIVOTEK INC.**  
6F, No.192, Lien-Cheng Rd., Chung-Ho,  
New Taipei City, 235, Taiwan, R.O.C.  
T: +886-2-82455282 F: +886-2-82455532  
E: sales@vivotek.com

**VIVOTEK USA**  
2050 Ringwood Avenue,  
San Jose, CA 95131  
T: 408-773-8686 F: 408-773-8298  
E: salesusa@vivotek.com

**VIVOTEK Europe**  
Randstad 22-133, 1316BW Almere,  
The Netherlands  
T: +31(0)36-5298-434  
E: sales europe@vivotek.com

Ver 1.2