



# Fixed Dome Network Camera FD8137H



1MP • WDR Pro • 15M IR • 3DNR

VIVOTEK FD8137H is an easy-to-use fixed dome network camera specifically designed for indoor security applications with a compact, stylish exterior. It features an HD WDR CMOS sensor to cope with challenging lighting conditions. The WDR Pro Technology allows the camera to capture both dark and bright parts of an image and combines the differences to generate a highly realistic image representative of the original scene, enabling it to provide video quality close to the capabilities of the human eye. This function enables the FD8137H to be widely applicable in high contrast environments such as lobby entrances, parking lots, ATMs, loading areas, and much more.

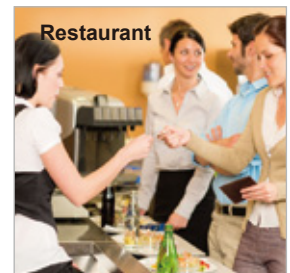
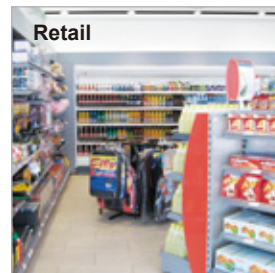
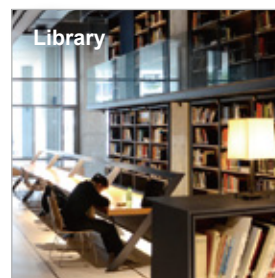
In order to adapt to constantly changing lighting conditions, the FD8137H features a removable IR-cut filter as well as improved IR illuminators effective up to 15M for superior image quality around the clock.

The FD8137H supports the industry-standard H.264 compression technology, drastically reducing file sizes and conserving valuable network bandwidth. With H.264, and MJPEG compatibility both included, the dual streams can be simultaneously transmitted in any of these formats at different resolutions, frame rates, and image qualities for versatile platforms. Thereby it further optimizes bandwidth and storage efficiency.

Incorporating a number of advanced features standard for VIVOTEK cameras, including tamper detection, 802.3af compliant PoE, MicroSD/SDHC/SDXC card slot, and VIVOTEK's 32-channel recording software, the FD8137H is the ideal solution for your indoor surveillance needs.

## Features

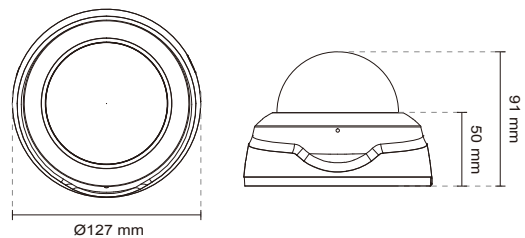
- 1-Megapixel CMOS Sensor
- 30 fps @ 1280x800
- Real-time H.264, MJPEG Compression (Dual Codec)
- Removable IR-cut Filter for Day & Night Function
- Built-in IR Illuminators, Effective up to 15 Meters
- WDR Pro for Unparalleled Visibility in High Contrast Environments
- Built-in 802.3af Compliant PoE
- Built-in MicroSD/SDHC/SDXC Card Slot for On-board Storage
- Supports ONVIF Standard to Simplify Integration and Enhance Interoperability
- 3D Noise Reduction for Low-light Conditions



## Technical Specifications

Models	FD8137H-F3 FD8137H-F6	<b>Network</b>	
<b>System Information</b>		Users	Live viewing for up to 10 clients
CPU	Multimedia SoC (System-on-Chip)	Protocols	IPv4, IPv6, TCP/IP, HTTP, HTTPS, UPnP, RTSP/RTP/RTCP, IGMP, SMTP, FTP, DHCP, NTP, DNS, DDNS, PPPoE, CoS, QoS, SNMP, 802.1X
Flash	128MB	Interface	10Base-T/100 BaseTX Ethernet (RJ-45)
RAM	256MB	ONVIF	Supported, specification available at <a href="http://www.onvif.org">www.onvif.org</a>
<b>Camera Features</b>		<b>Intelligent Video</b>	
Image Sensor	1/3" Progressive CMOS	Video Motion Detection	Triple-window video motion detection
Maximum Resolution	1280x800 (1MP)	<b>Alarm and Event</b>	
Lens Type	Fixed-focal	Alarm Triggers	Video motion detection, manual trigger, digital input, periodical trigger, system boot, recording notification, camera tampering detection
Focal Length	f = 3.6 mm (FD8137H-F3) f = 6 mm (FD8137H-F6)	Alarm Events	Event notification using digital output, HTTP, SMTP, FTP and NAS server File upload via HTTP, SMTP, FTP and NAS server
Aperture	F1.8 (FD8137H-F3) F1.6 (FD8137H-F6)	<b>General</b>	
Field of View	FD8137H-F3: 86° (Horizontal) 51° (Vertical) 103° (Diagonal) FD8137H-F6: 59° (Horizontal) 32° (Vertical) 70° (Diagonal)	Connectors	RJ-45 for Network/PoE connection Digital input*1
Shutter Time	1/5 sec. to 1/32,000 sec.	LED Indicator	System power and status indicator
WDR Technology	WDR Pro	Power Input	IEEE 802.3af PoE Class 2
Day/Night	Removable IR-cut filter for day & night function	Power Consumption	Max. 5.1W
Minimum Illumination	FD8137H-F3: 1.05 Lux @ F1.8, 50 IRE (Color) 0.001 Lux @ F1.8, 50 IRE (B/W) FD8137H-F6: 0.48 Lux @ F1.6, 50 IRE (Color) 0.001 Lux @ F1.6, 50 IRE (B/W)	Dimensions	Ø: 127 mm x 91 mm
Pan Range	350°	Weight	Net: 440 g
Tilt Range	60°	Safety Certifications	CE, LVD, FCC Class B, VCCI, C-Tick
Rotation Range	350°	Operating Temperature	0°C ~ 50°C (32°F~ 122°F)
Pan/tilt/zoom Functionalities	ePTZ: 48x digital zoom (4x on IE plug-in, 12x built-in)	Warranty	24 months
IR Illuminators	Built-in IR illuminators, effective up to 15 meters IR LED*8	<b>System Requirements</b>	
On-board Storage	MicroSD/SDHC/SDXC card slot	Operating System	Microsoft Windows 7/Vista/XP/2000
<b>Video</b>		Web Browser	Mozilla Firefox 7~10 (streaming only) Internet Explorer 7/8/9
Compression	H.264 & MJPEG	Other Players	VLC: 1.1.11 or above QuickTime: 7 or above
Maximum Frame Rate	30 fps @ 1280x800 In both compression modes	<b>Included Accessories</b>	
Maximum Streams	2 simultaneous streams	CD	User's manual, quick installation guide, Installation Wizard 2, ST7501 32-channel recording software
S/N Ratio	Above 53 dB	Others	Quick installation guide, warranty card, alignment sticker, screw pack, software CD
Dynamic Range	110 dB		
Video Streaming	Adjustable resolution, quality and bitrate Configurable video cropping for bandwidth saving		
Image Settings	Adjustable image size, quality and bit rate Time stamp, text overlay, flip & mirror Configurable brightness, contrast, saturation, sharpness, white balance, exposure control, gain, backlight compensation, privacy masks Scheduled profile settings, 3D Noise Reduction		
<b>Audio</b>			
Audio Capability	Audio input		
Compression	G.711 / G.726		
Interface	Built-in microphone		
Effective Range	5 meters		

## Dimensions



## Compatible Accessories

### Mounting Kits



**AM-211**  
L-shape wall mount

### PoE Kits



**POE-IJ-1748NDN**  
802.3af Compliant PoE Injector

All specifications are subject to change without notice. Copyright © 2013 VIVOTEK INC. All rights reserved.

Distributed by:



**VIVOTEK INC.**  
6F, No.192, Lien-Cheng Rd., Chung-Ho, New Taipei City, 235, Taiwan, R.O.C.  
|T: +886-2-82455282 | F: +886-2-8245532 | E: [sales@vivotek.com](mailto:sales@vivotek.com)

**VIVOTEK USA, INC.**  
2050 Ringwood Avenue, San Jose, CA 95131  
|T: 408-773-8886 | F: 408-773-8298 | E: [salesusa@vivotek.com](mailto:salesusa@vivotek.com)

Ver 1.0