



### VM61514-5-MM and VM621-5-MM Monitor Mounts

- Designed specifically for Vicon monitors VM614-3, VM615-5 and VM621-5
- Wall or ceiling mounting
- Easy installation

The VM61514-5-MM and VM621-5-MM Monitor Mounts provide secure, attractive mounting for Vicon monitors. The VM61514-5-MM is for use the VM614-3 and VM615-5 monitors; the VM621-5-MM is for use with the VM621-5 monitor. These mounts can be incorporated into any décor. The monitor mount can be mounted to a ceiling with the use of the V1501CA Ceiling Adapter or to a wall with the use of the V1501WM Wall Mount Adapter.


#### ASSOCIATED EQUIPMENT AND ACCESSORIES

**Model V1502CA Ceiling Adapter, Product Code 2184:** Used for ceiling mounting of VM61514-5-MM and VM621-5-MM monitor mounts. Weight: 3.0 lb (1.4 kg).

**Model V1501WM Wall Mounting Adapter, Product Code 2183:** Used for wall mounting of VM61514-5-MM and VM621-5-MM monitor mounts. Weight: 7.1 lb (3.2 kg).

Model Number	Product Code	Monitor Compatibility
VM61514-5-MM	8077-10	VM614-3, VM615-5
VM621-5-MM	7297-20	VM621-5

**Table 1: Models, Product Codes and Compatibility**

<b>Vicon Product Facts</b>		<b>Model No:</b> Refer to Table 1	<b>Product Code:</b> Refer to Table 1	<b>SEC: 6</b>	<b>SPEC:</b> 984-10	<b>REV: 905</b>
----------------------------	---	--------------------------------------	--	---------------	------------------------	-----------------

## MECHANICAL

**Mounting:** Masonry: 5/16-inch lag screws, lockwashers and lead anchors  
 Wood: 5/16 x 2-1/2-inch lag screws and lockwashers.  
 Steel: 5/16-inch machine screws, nuts and lockwashers.

**Monitor Size:** 14 in. to 21 in.  
 (356 mm to 533 mm).

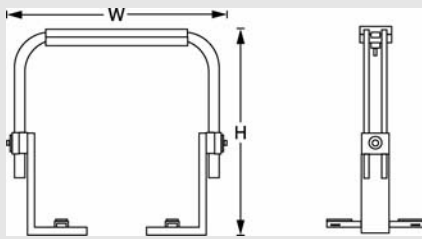
**Load Rating:** 150 lb (68 kg).

**Maximum Dimensions:** Height (H): 26.5 in. (670 mm).  
 Width (W): 30.0 in. (760 mm).  
 V1501WM/V1502CA: Figure 1.

**Weight:** Approximately 17.3 lb (7.8 kg).

**Construction:** Aluminum and steel.

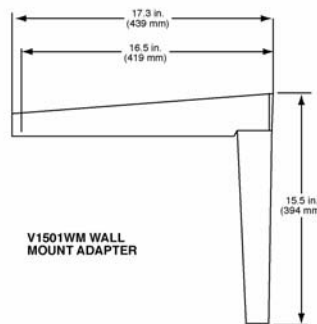
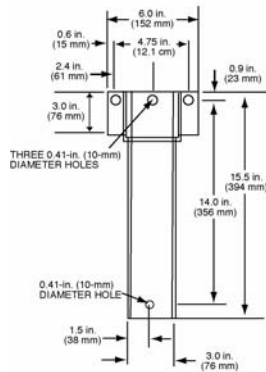
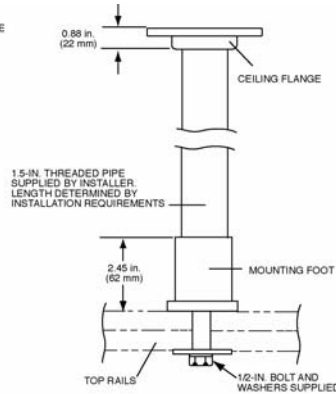
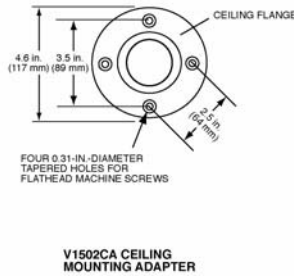
**Finish:** Dark gray enamel and black.



**Shipping Dimensions:** Monitor Mount (2 boxes)  
 Height: 3.5 in. (89 mm).  
 Width: 20.5 in. (521 mm).  
 Depth: 22.0 in. (559 mm).  
 VM61514-5-MM:  
 Height: 3.5 in. (89 mm).  
 Width: 13.5 in. (343 mm).  
 Depth: 3.5 in. (89 mm).  
 VM621-5-MM:  
 Height: 5 in. (13 mm).  
 Width: 17 in. (432 mm).  
 Depth: 5 in. (13 mm).  
 V1501WM:  
 Height: 6.3 in. (160 mm).  
 Width: 16.0 in. (406 mm).  
 Length: 18.25 in. (464 mm).  
 V1502CA:  
 Height: 3.75 in. (95 mm).  
 Width: 5.0 in. (127 mm).  
 Length: 5.3 in. (135 mm).

**Shipping Weight:** Approximately 19.5 lb (8.8 kg).  
 V1501WM: 8.7 lb (3.9 kg).  
 V1502CA: 3.2 lb (1.5 kg).

**Shipping Volume:** Monitor Mount (2 boxes)  
 0.9 ft<sup>3</sup> (0.025 m<sup>3</sup>);  
 VM61514-5-MM:  
 0.096 ft<sup>3</sup> (0.0027 m<sup>3</sup>).  
 VM621-5-MM:  
 0.25 ft<sup>3</sup> (0.007 m<sup>3</sup>).  
 V1501WM: 1.1 ft<sup>3</sup> (0.03 m<sup>3</sup>).  
 V1502CA: 0.06 ft<sup>3</sup> (0.002 m<sup>3</sup>);



**Figure 1: V1502CA Ceiling Adapter and V1501WM Wall Mounting Adapter**