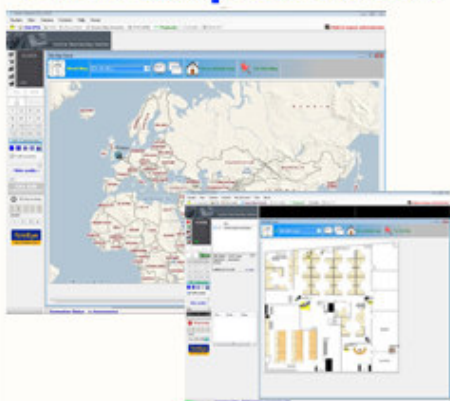


TeleEye Central Monitoring Station Version 3.0 (CMS V3)



Site Map Module



Brand	TeleEye
Model Code	CMS V3
Model	<ul style="list-style-type: none"> · CMD-030 (30 Monitoring Sites) · CMD-100 (100 Monitoring Sites) · CMD-200 (200 Monitoring Sites)
Standard of Compliance	BS 8418: 2003
Functional Modules	<ul style="list-style-type: none"> · Central Data Server (Microsoft SQL Server) · Information Server · Video Server · Playback Server · Video Viewer
Site Map (CMS3-SM)	<ul style="list-style-type: none"> · Freely allocates and view cameras on site map · Perform PTZ operations to camera locations · Event alert on map upon alarm occurrence · Clear alarm · Switch site map · Control audio operations
24 x 7 Operations	<ul style="list-style-type: none"> · Robust & Reliable · Monitor 24-hour / day, 7-day / week
Compliant with TeleEye's Models	<ul style="list-style-type: none"> · RX Series · NX Series · CX Series
System Requirements	<ul style="list-style-type: none"> · CPU: Pentium (R) Dual-Core 2.2GHz or above · RAM: 2GB or above · HDD: 1GB of free disk space or above · Display: 1024x768 pixels, 24-bit colour · OS: MS Windows 2003, XP, Vista