

# SNC-VM600B

Network Mini Dome HD Camera – V Series

**SONY**  
make.believe

## Mini Dome 720p/30fps Camera Powered by IPELA ENGINE EX™ Technology

- Maximum resolution of 1280 x 1024 pixels with the Exmor™ CMOS sensor
- Three simultaneous video streams
- Extremely Wide Dynamic Range to 130dB achieved with View-DR technology
- New video analytics functions including face detection and object removal/left behind
- H.264 (High/Main/Baseline Profile)/JPEG video codecs and AAC (16 kHz/48 kHz)/G.726/G.711 audio codecs
- Minimum illumination of 0.05 lx in Color and 0.04 lx in B/W (50 IRE @ 1/30 sec)



### KEY FEATURES

- IPELA ENGINE EX signal processing system developed based on Sony's unique signal processing and video analytics technologies to provide unique features such as a View-DR, XDNR™, and DEPA™ Advanced technologies

**IPELA**  
ENGINE EX

- View-DR – Sony's innovative wide dynamic range technology – to capture objects clearly and adaptively even under very harsh, severe backlight or highlight conditions

**View-DR**



OFF



ON

Actual Images

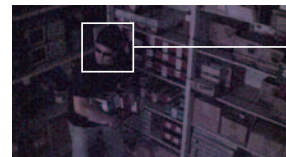
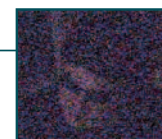
- Visibility Enhancer (VE) to optimize the brightness and color reproduction of an image dynamically on a pixel-by-pixel basis while continuously adapting to the scene within the given dynamic range
- DEPA Advanced Intelligent Video Analytics to trigger an alarm based on user-defined rules
- True D/N (Day/Night) function to switch to Day or Night mode depending on the light level
- SD memory card slot for an on-board recording capability<sup>1</sup>



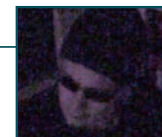
- XDNR (eXcellent Dynamic Noise Reduction) technology for clear images with virtually no motion blur under low illumination



OFF



ON



Actual Images

- Built-in HTML viewer compatible with most Smartphones
- Easy Focus - allows installer/user to focus the camera remotely using a PC or locally
- Easy Zoom - allows installer/user to change field of view locally or remotely using a PC
- Powered by either PoE (IEEE 802.3af-compliant), AC 24 V ±20%, or DC 12 V ±10% for easy installation
- ONVIF™ (Open Network Video Interface Forum) Profile S conformance software that ensures greater interoperability and more flexibility in building multiple-vendor systems
- VBR (variable bitrate) or CBR (constant bitrate) encoding format selectable to correspond with various network conditions
- Easy initial network settings with supplied SNC Easy IP Setup Guide application
- Image Stabilizer to help minimize the effect of camera shake or vibration for less blurry images



<sup>1</sup> Data recorded on an SD memory card (sold separately) may be lost or damaged by data access during power-off, mechanical shock, memory card detachment, or other operations. Data loss or damage can also occur when a memory card reaches end of life, which varies according to operational conditions. No guarantee is given against damage (including passive damage). The on-board recording function, the intelligent motion detection function and the tamper alarm function cannot be used simultaneously.

**IPELA**™

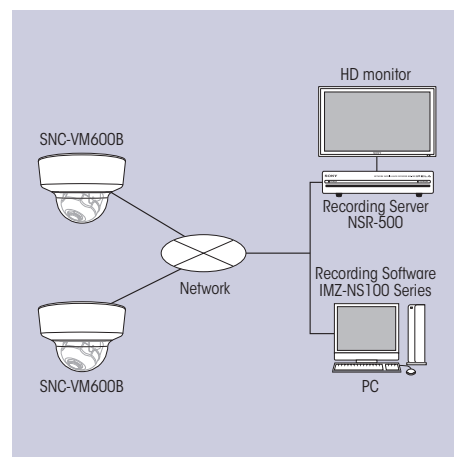
## SPECIFICATIONS

| SNC-VM600B                                |   |
|---|---|
| <b>Camera</b>                             |   |
| Image Sensor                              | 1/3-type progressive scan Exmor CMOS  |
| Image Sensor (Number of Effective Pixels) | Approx. 1.37 Megapixels   |
| Signal System                             | NTSC color system   |
| Minimum Illumination (50 IRE)             | Color: 0.05 lx (F1.2, View-DR OFF, VE OFF, AGC ON, 1/30 s, 30 fps)<br>B/W: 0.04 lx (F1.2, View-DR OFF, VE OFF, AGC ON, 1/30 s, 30 fps)  |
| Minimum Illumination (30 IRE)             | Color: 0.03 lx (F1.2, View-DR OFF, VE OFF, AGC ON, 1/30 s, 30 fps)<br>B/W: 0.02 lx (F1.2, View-DR OFF, VE OFF, AGC ON, 1/30 s, 30 fps)  |
| Dynamic Range                             | Equivalent to 130 dB with View-DR technology  |
| S/N Ratio                                 | More than 50 dB (Gain 0 dB)   |
| Gain                                      | Auto  |
| Shutter Speed                             | 1/1 s to 1/10000 s  |
| Sync System                               | Internal synchronization  |
| Exposure Control                          | Exposure compensation, AGC, Shutter speed, Iris   |
| White Balance                             | ATW, ATW-PRO, Fluorescent lamp, Mercury lamp, Sodium vapor lamp, Metal halide lamp, White LED, One push WB, Manual  |
| Lens                                      | Built-in vari-focal lens  |
| Powered Zoom                              | Yes (Easy Zoom)   |
| Zoom Ratio                                | Optical zoom 3x, Digital zoom 2x  |
| Powered Focus                             | Yes (Easy Focus)  |
| Horizontal Viewing Angle                  | 93.0° to 31.6°  |
| Vertical Viewing Angle                    | 50.6° to 17.8°  |
| Focal Length                              | f = 3.0 mm to 9.0 mm  |
| F-Number                                  | F1.2 (Wide), F2.1 (Tele)  |
| Minimum Object Distance                   | 300 mm  |
| Horizontal Resolution                     | 600 TV lines (analog video) *2  |
| Preset Position                           | 8   |
| Tour                                      | 5   |
| <b>Camera Features</b>                    |   |
| Day/Night                                 | Yes   |
| Wide-D                                    | Yes (View-DR)   |
| Image Enhancement                         | Visibility Enhancer (VE)  |
| Noise Reduction                           | XDNR technology   |
| Image Stabilizer                          | Yes *4  |
| <b>Image</b>                              |   |
| Codec Image Size (H x V)                  | 1280 x 1024, 1280 x 960, 1024 x 768, 1280 x 720, 800 x 600, 720 x 576, 720 x 480, 704 x 576, 640 x 480, 352 x 288, 320 x 240 (H.264, JPEG)  |
| Video Compression Format                  | H.264 (High/Main/Baseline Profile), JPEG  |
| Codec Streaming Capability                | Triple Streaming *1, CBR/VBR (selectable)   |
| Maximum Frame Rate                        | H.264: 30 fps (1280 x 1024)<br>JPEG: 30 fps (1280 x 1024)   |
| <b>Audio</b>                              |   |
| Audio Compression Format                  | G.711/G.726/AAC (16 kHz, 48 kHz)  |
| <b>Scene Analytics</b>                    |   |
| Intelligent Motion Detection              | Yes   |
| Face Detection                            | Yes *3  |
| Rule-based Filter                         | DEPA Advanced   |
| <b>Network</b>                            |   |
| Protocols                                 | IPv4, TCP, UDP, ARP, ICMP, IGMP, HTTP, DHCP, DNS, NTP, RTP/RTCP, RTSP, SMTP, IP v6 *3, HTTPS, SNMP (MIB-2)  |
| ONVIF Conformance                         | Yes (Profile S) *3  |
| Number of Clients                         | 20  |
| Authentication                            | IEEE 802.1X   |
| <b>Interface</b>                          |   |
| Analog Video Output                       | BNC x1, 1.0 Vp-p, 75 Ω, unbalance, sync negative  |
| Analog Monitor Output                     | Phono jack x1   |
| Line Input                                | Mini jack (monaural)  |
| Line Output                               | Mini jack (monaural), Maximum output level: 1 Vrms  |
| Network Port                              | 10BASE-T/100BASE-TX (RJ-45)   |
| Sensor Input                              | x 2, make contact, break contact  |
| Alarm Output                              | x 2, 24 V AC/DC, 1 A (mechanical relay outputs electrically isolated from the camera)   |
| Microphone Input                          | Mini jack (monaural)  |
| Card Slots                                | SD Card x 1   |
| <b>System Requirements</b>                |   |
| Operating System                          | Windows® XP (32 bit) Professional Edition<br>Windows Vista® (32 bit) Ultimate, Business Edition<br>Windows 7 (32/64 bit) Ultimate, Professional Edition   |
| Processor                                 | Intel Core i7 2.8 GHz or higher   |
| Memory                                    | 2 GB or more  |
| Web Browser                               | Microsoft Internet Explorer® Ver. 7.0, Ver. 8.0, Ver. 9.0<br>Firefox® Ver. 3.5 (Plug-in free viewer only)<br>Safari® Ver. 4.0 (Plug-in free viewer only)<br>Google Chrome™ Ver. 4.0 (Plug-in free viewer only)                    |
| <b>General</b>                            |   |
| Power Requirements                        | PoE system (IEEE 802.3af compliant), DC 12 V ± 10%, AC 24 V ± 20%   |
| Power Consumption                         | 6.0 W max.  |
| Operating Temperature                     | 14°F to 122°F (-10°C to +50°C)  |
| Starting Temperature                      | 32°F to 122°F (0°C to 50°C)   |
| Storage Temperature                       | -4°F to +140°F (-20°C to +60°C)   |
| Operating Humidity                        | 20% to 80%  |
| Storage Humidity                          | 20% to 95%  |
| Dimensions (W x H x D)                    | ø5 7/8 inches x 4 3/8 inches (ø148 mm x 108 mm)   |
| Weight                                    | Approx. 1 lb 11 oz (760 g)  |
| Safety Regulations                        | JATE Technical standard (LAN)<br>UL2044, IEC60950-1 (CB)<br>VCCI (Class A), FCC (Class A), IC (Class A)<br>Emission: EN55022 (Class A) + EN50130-4<br>Immunity: EN55022 (Class A) + EN55024<br>Emission: AS/NZS CISPR22 (Class A) |
| Supplied Accessories                      | CD-ROM (supplied programs) (1), Installation Manual (1), Template (1), Audio cable (1), I/O cable (1), BNC cable (1), Power input cable (1), Screw M3 (1), Bracket (1), Wire rope (1), Safety regulations (1)                     |

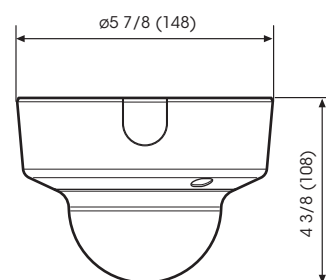
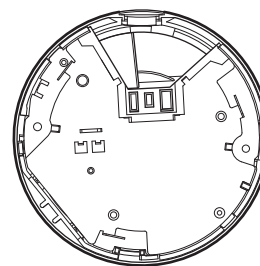
\*1 Triple streaming (any combination with JPEG/H.264, including multiple streams of the same format)

\*2 Monitor display ratio 4:3 \*3 Version 1.4 or later \*4 Default setting: OFF

## SYSTEM CONFIGURATION



## DIMENSIONS



Unit: inches (mm)