



## B24 Bridge



**SKU: SILB24BR**

### ■ Features

- 11Mbps
- Lower total cost of Point to Multipoint wireless system
- IP Router + NAT
- Designed for Outdoor application
- IEEE802.11b
- 3 LED's
- Point-to-Point
- Point-to-Multipoint
- PoE

### ■ What is the B24 Bridge?

The B24 BRIDGE X was designed for Point to Point and Point to multi-point outdoor applications.

The B24 BRIDGE can create an 11Mbps connection between two buildings via WDS.

It has a external N Type port to allow you to connect an external antenna.

The housing is designed to be rainproof and dustproof which means that the network will maintain stable and reliable.

The B24 Bridge can reset automatically if the wireless connection fails, and the network will keep the connection.

The B24 BRIDGE is fully compatible with the IEEE802.11b standard.

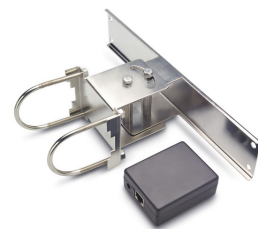
### ■ The advantages of the B24 15dBi

● Stable and reliable network. Being Weatherproof and having a a rugged design, the B24 Bridge is perfectly designed to meet the needs of the harshest outdoor environments.

● Simple network structure. Easy to install. Power over Ethernet functionality requires only a single Ethernet cable between the LAN and the B24 Bridge for sufficient power.

### Contents

- B24 Bridge \*1
- Mounting brackets \*1
- Product CD \*1
- Power Adapter(24V) \*1



Feature	
Rate select	11 5.5 2 1 Mbps, auto select
Frequency	2.412 ~ 2.484 GHz
Bridge mode-PtP	Yes
Bridge mode-PtMP	Yes
Repeater	Yes
Router	NAT, bridge pass-thru (non-TCP/IP)
Test Link	Yes
Link status	Yes
DHCP Client	Yes
Standards	IEEE802.11b IEEE802.3/u (10/100BaseTRJ-45) IEEE802.3af
Support protocol	TCP/IP IPX NETBEUI
Security	
WEP Encryption	64 / 128 bits
Mac address filter	Yes
Physical	
Antenna	External antenna
LAN/WAN	One 10/100BASE-T (RJ-45) LAN Port
Default button	Yes
LED	POWER/LINK/LAN
Power	24VDC/1A Compliant to IEEE802.3af
Channel (Country Dependent)	USA (FCC): 11 Japan: 14 Europe (ETSI): 13 France: 4 Spain: 2
RF output power	20dBm
Sensitivity	-101dBm@11Mbps
Weight	1Kg
Dimensions	19cm(L) x 14cm(W) x 8.5cm(H)
Management	
WEB	Yes
Windows-based utility	Yes
SNMP MIB	Yes
Telnet	Yes
Environment	
Operating Temperature	-20~55℃
Storage Temperature	-20~80 ℃
Humidity	5~90 %



## B24 Series Product Information

### B24 15dBi X

#### Wireless Outdoor Access Point/Bridge

◆Integrated 15dB antenna. Supports POE and 24V DC. Work at 2.4 GHz with encryption. Point to point and point to multipoint.

SKU: SILB24i

### B24 Bridge X

#### Wireless Outdoor Access Point/Bridge

◆External port with N Type connector. supports POE. Work at 2.4 GHz. 11 Mbps. Point to point, point to multipoint.

SKU: SILB24BR

Distributed by:

Copyright © SilverNet Limited. All rights reserved. All other company and product names may be trademarks of their respective companies. Whilst every effort is made to make sure the information shown is accurate SilverNet Limited cannot accept liability for any errors that may arise.

No freedom to use information, patents, trade marks, or other intellectual property rights is implied by the publication of this document. E&OE

SilverNet Limited reserve the right to change specifications and other information within this document without notice and your attention is brought to the fact that performance figures are under ideal conditions. Actual performance will depend on many environmental factors and it is recommended that a site survey if undertaken prior to installation.

Please also note that this equipment may also be subject to local legislative restrictions such as Band C operation within the UK. It is the end users responsibility to ensure that the installation complies with any such restrictions that are in force.