

High Resolution Day & Night Dome Camera SID-47/48/49

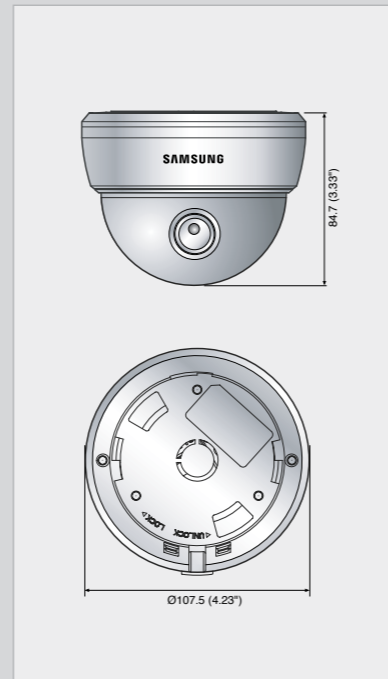


Specifications

	SID-47N	SID-47P	SID-48N	SID-48P	SID-49N	SID-49P
ELECTRICAL						
Input Voltage	Dual (12V DC/ 24V AC)					
Power Consumption	Max. 2.5W					
VIDEO						
Imaging Device	1/3" Super HAD CCD					
Total Pixels	811(H) x 508(V)	795(H) x 596(V)	811(H) x 508(V)	795(H) x 596(V)	811(H) x 508(V)	795(H) x 596(V)
Effective Pixels	768(H) x 494(V)	752(H) x 582(V)	768(H) x 494(V)	752(H) x 582(V)	768(H) x 494(V)	752(H) x 582(V)
Scanning System	2 : 1 Interlace					
Synchronization	Internal / Line lock					
Frequency	H : 15.734KHz V : 59.94Hz	H : 15.625KHz V : 50Hz	H : 15.734KHz V : 59.94Hz	H : 15.625KHz V : 50Hz	H : 15.734KHz V : 59.94Hz	H : 15.625KHz V : 50Hz
Horizontal Resolution	580TV lines (Min.)					
Min. Illumination	Color : 0.15Lux (50 IRE@F1.2), 0.0006Lux (Sens-up, 256X)					
S / N (Y signal)	52dB					
Video Output	CVBS : 1.0Vp-p / 75Ω					
LENS						
Zoom Ratio	Fixed					
Focal Length	3.7mm		8mm		3.7, 8mm	
Max. Aperture Ratio	F2.0					
Min. Object Distance	0.4m (1.31ft)					
Angular Field of View	H : 71°, V : 52°		H : 33°, V : 25°		H : 71°, V : 52° / H : 33°, V : 25°	
PAN / TILT / ROTATE						
Pan Range	0° ~ 352°					
Tilt Range	0° ~ 75°					
Rotate Range	0° ~ 348°					
OPERATIONAL						
On Screen Display	Built-in (Multi-language support)					
Camera Title	On / Off					
Day & Night	Auto (Electrical) / Color / B/W					
Backlight Compensation	BLC / HLC / Off					
Motion Detection	On / Off					
Privacy Masking	On / Off (8 Programmable zones)					
3D Noise Filter (SSNRII)	On / Off					
Sens-up (Frame Integration)	On / Off (Selectable limit ~ 256X)					
Gain Control	Low / High / Off					
White Balance	ATW / AWC / Manual / Indoor / Outdoor					
Electronic Shutter Speed	Auto (NTSC : 1/60 ~ 1/120,000sec, PAL : 1/50 ~ 1/120,000) / Manual / A/FLK					
Flip	On / Off					
Mirror	On / Off					
ENVIRONMENTAL						
Operating Temperature / Humidity	-10°C ~ +50°C / 20% ~ 80% RH					
Storage Temperature / Humidity	-20°C ~ +60°C / 20% ~ 90% RH					
MECHANICAL						
Dimension (WxH)	Ø107.5 x 84.7mm (Ø4.23" x 3.33")					
Weight	260g (0.57 lb)					

Dimensions

Unit : mm (inch)



The Eco mark represents Samsung Techwin's will to create environment-friendly products, and indicates that the product satisfies the EU RoHS Directive.

Design and specifications are subject to change without notice.



SAMSUNG TECHWIN CO., LTD.
145-3, Sangdaewon 1-dong, Jungwon-gu, Seongnam-si, Gyeonggi-do Korea 462-703
Tel : +82-31-740-8151-8 Fax : +82-31-740-8145
www.samsungcctv.com

SAMSUNG TECHWIN AMERICA
1480 Charles Willard St. Carson, CA 90746, UNITED STATES
Tel : +1-310-632-1234 Fax : +1-310-632-2195
www.samsungcctvusa.com

SAMSUNG OPTO-ELECTRONICS UK, LTD.
Samsung House, 1000 Hillwood Drive, Hillwood Business Park
Chertsey, Surrey, UNITED KINGDOM KT16 0PS
Tel : +44-1932-45-5308 Fax : +44-1932-45-5325

TIANJIN SAMSUNG OPTO-ELECTRONICS CO., LTD.
No.9 Zhangheng Street, Micro-Electronic Industrial Park
Jingang Road, Tianjin, P.R. CHINA 300385
Tel : +86-22-23887788-8503 Fax : +86-22-23887788-8505

■ DISTRIBUTED BY



I.D-0809

imagine clarity you can see in Day & Night

The Samsung Techwin SID-47/48/49 is redefining what you should expect for features and performance in a fixed mini-dome camera. Using our 4th generation W-IV DSP, these cameras feature 580TV lines of resolution in color and 700TV lines of resolution in black and white. In addition, features such as digital image stabilization and 3D digital noise filtering come standard making it the most cost effective and powerful mini dome in it's class.

SAMSUNG TECHWIN



Compact Design, Powerful Performance

High Resolution Day & Night Dome Camera SID-47/48/49

The SID-47, SID-48 and SID-49 are compact high performance cameras that will re-define what you would expect in a low-cost indoor fixed dome. They utilize the latest W-IV DSP engine, which means they offer a lot of performance and functionality that you would normally expect to see in a much higher cost product. These features include Day & Night operation, a low light level performance of 0.15Lux, and resolution that is higher than 580TV lines. In addition, there are built-in functions including the convenient OSD setup menus, 8 zone privacy masking, and motion detection.

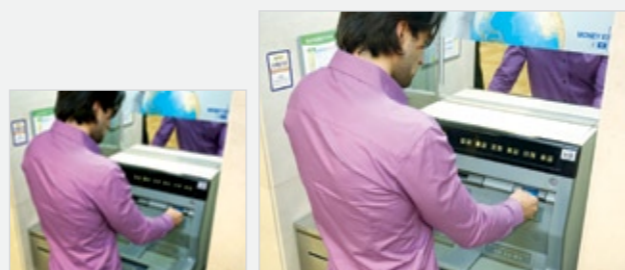


The Versatile Mini Dome with 3-Axis Rotation

High Resolution

580TVL High resolution of 580TV lines

SID-47/48/49 cameras produce high quality images of 580TV lines resolution by applying Samsung Techwin's own image processing technology. This technology uses sophisticated exposure control and edge detection algorithms to provide the highest resolution image for any standard definition camera in the industry.



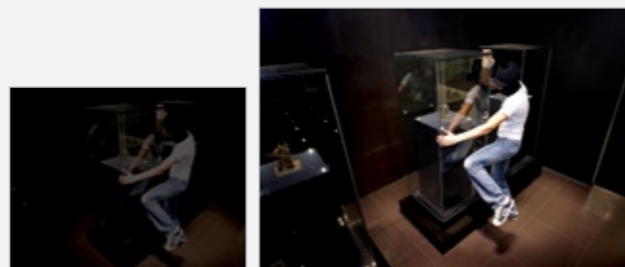
Conventional Camera

SID-47/48/49

High Sensitivity

0.15Lux Low light performance

The SID-47/48/49 works extremely well in challenging low light applications. It requires only 0.15Lux to provide color pictures, and when light levels fall below this, it switches to B/W mode for greater sensitivity. In addition, the SID-47/48/49 offer Sens-up frame integration mode which makes it possible to operate down to levels as low as 0.0006Lux.



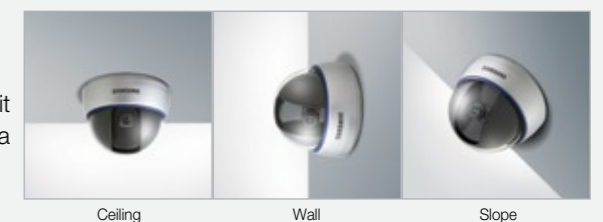
Conventional Camera

SID-47/48/49

Easy To Install

3-Axis mechanical design

The SID-47/48/49 lens can be positioned to any angle allowing the unit to be easily mounted on a wall or a sloped surface. This allows the camera angle to be adjusted even after it has been installed.



Ceiling

Wall

Slope

Various choices of lenses

The SID-47 comes with a 3.7mm fixed lens that provides a wide angle view that is ideal for small areas. The SID-48 comes with a 8mm fixed lens which affords a 33° horizontal field of view which is ideal for most of indoor applications. The SID-49 includes both the 3.7 and 8mm fixed lenses allowing installers to select the lens needed for the specific application.



3.7mm

8mm

Advanced Features

The SID-47/48/49 includes many advanced features and performance normally found only in expensive system cameras.

- Backlight Compensation (BLC)
- Highlight compensation (HLC)
- 3D noise filter (SSNR II)
- Programmable motion detection and privacy masking
- Wide range of white balance
- Frame integration (Sens-up)
- Programmable on screen menus