



Smart Surveillance Function



Built-in HLC/User BLC for optimized backlight blocking by area

The SHC-745 is equipped with HLC (High Light Compensation) which blocks strong partial backlights, and User BLC which enables the user to set areas freely. The identification capability of subjects is improved by achieving optimal images regardless of environments.



HLC



User BLC



Multi-language OSD Setting

The SHC-745 allows OSD menu setting and supports the Multi-language for OSD setting including English, Spanish, French, German, Italian and Chinese, resulting in easy, quick and user-friendly setting.



Motion Detection & Privacy Masking

The SHC-745 can detect motion enabling the user to specify up to 8 areas on the surveillance screen and to set sensitivity and colors. The user can specify which colors to be used in the masking of surveillance block areas.



Motion Detection

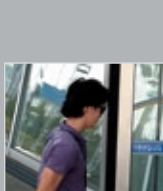


Privacy Masking



10X Digital Zoom, RS-485 Support

The SHC-745 supports a max.10X digital continuous zoom, making the identification of a subject easier. The menu on the camera can be set from a distance via RS-485 communication.



10X Digital Zoom



1/2" Ultra Low Light High Resolution Camera

SHC-745

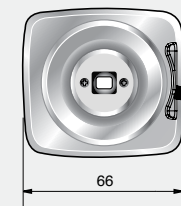
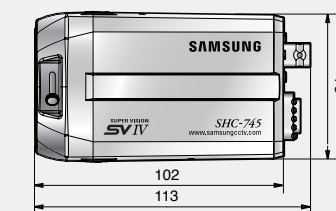


Specifications

Mode	SHC-745N	SHC-745P
Power Source	24V AC / 12V DC (±10%)	
Power Consumption	Max. 4.0W	
Image Pick-up Device	1/2" Ex-view HAD CCD	
Total Pixels	811(H) x 508(V)	795(H) x 596(V)
Effective Pixels	768(H) x 494(V)	752(H) x 582(V)
Scanning System	2 : 1 Interlace	2 : 1 Interlace
Synchronization	525 Lines / 60 Fields / 30 Frames	
Scanning Frequency	Horizontal : 15,734KHz Vertical : 59.94Hz	Horizontal : 15,625KHz Vertical : 50Hz
Horizontal Resolution	Color : 560TV lines (Min.) / B/W : 700TV lines (Min.)	
Video Output	1.0Vp-p / 75Ω (Video 0.714Vp-p, Sync 0.286Vp-p)	1.0Vp-p / 75Ω (Video 0.7Vp-p, Sync 0.3Vp-p)
S / N Ratio (Y signal)	52dB (AGC off, Weight on)	
Min. Illumination	0.05Lux@F1.2 (Normal color mode) 0.006Lux@F1.2 (B/W mode) 0.0001Lux@F1.2 (Sens-up mode)	
Day & Night	Color / B/W / Auto (ICR filter change) / EXT selectable	
Back Light Compensation	BLC / HLC / Off selectable	
Gain Control	Low / High / Off selectable	
White Balance	ATW / AWC / Manual selectable (1,800°K ~ 10,500°K)	
Electronic Shutter Speed	Auto / Manual selectable (1/60 ~ 1/100,000sec)	Auto / Manual selectable (1/50 ~ 1/100,000sec)
Sens-up	On / Off (Selectable limit ~ 256X)	
OSD	Multi-language support (English, Japanese, Spanish, Korean)	Multi-language support (English, French, German, Spanish, Italian, Chinese)
SSNR	On / Off selectable (Level adjustable)	
Motion Detection	On / Off selectable (Output via terminal)	
Digital Zoom	On / Off (2X ~ 10X)	
Privacy Function	On / Off selectable (8 Zone, Alarm output)	
Digital Image Stabilizer (DIS)	On / Off selectable	
Mirror	On / Off selectable	
Sharpness	On / Off selectable (Level adjustable)	
BFL	Built-in	
Blemish Compensation	256point (Even 128point, ODD 128point)	
Communication	RS-485	
Iris Control	DC / Video	
Lens Mount	C / CS-mount (Easy focus type)	
Operating Temperature	-10°C ~ +50°C	
Operating Humidity	30% ~ 80% RH	
Dimensions	66(W) x 61(H) x 102(D)mm	
Weight	315g	

Dimensions

Unit : mm



Rear Panel



The Eco mark represents Samsung Techwin's will to create environment-friendly products, and indicates that the product satisfies the EU RoHS Directive.

SAMSUNG
SAMSUNG TECHWIN

SAMSUNG TECHWIN CO., LTD.
145-3, Sangdaewon 1-dong, Jungwon-gu,
Seongnam-si, Gyeonggi-do Korea 462-703
Tel : +82-31-740-8151 ~ 8 Fax : +82-31-740-8145
www.samsungcctv.com

TIANJIN SAMSUNG OPTO-ELECTRONICS CO., LTD.
7 Pingchang Rd., Nankai Dist. Tianjin 300190, P.R.China
Tel : +86-22-2761-4724(33821) Fax : +86-22-2761-6514

SAMSUNG OPTO-ELECTRONICS UK, LTD.
Samsung House, 1000 Hillwood Drive,
Hillwood Business Park Chertsey, Surrey KT16 0PS
Tel : +44-1932-45-5326 Fax : +44-1932-45-5325

Design and specifications are subject to change without notice.

■ DISTRIBUTED BY



I.D-0802

SV IV

Master of light and darkness!

Ultra Low Light
High Resolution Camera

SHC-745



imagine Super Vision at Ultra Low Light

The SHC-745 by Samsung Techwin is an ultra low-light high resolution camera with a built-in 4th generation DSP image processor chipset and a 1/2" high sensitivity Ex-view CCD image sensor. Resolution and image quality at low light for day and night have improved drastically. The SHC-745 is a versatile surveillance camera integrated with enhanced additional functions such as Multi-language OSD, DIS shaking correction, ICR Day & Night, BLC which is configurable by area and motion detection.

SAMSUNG TECHWIN

SAMSUNG

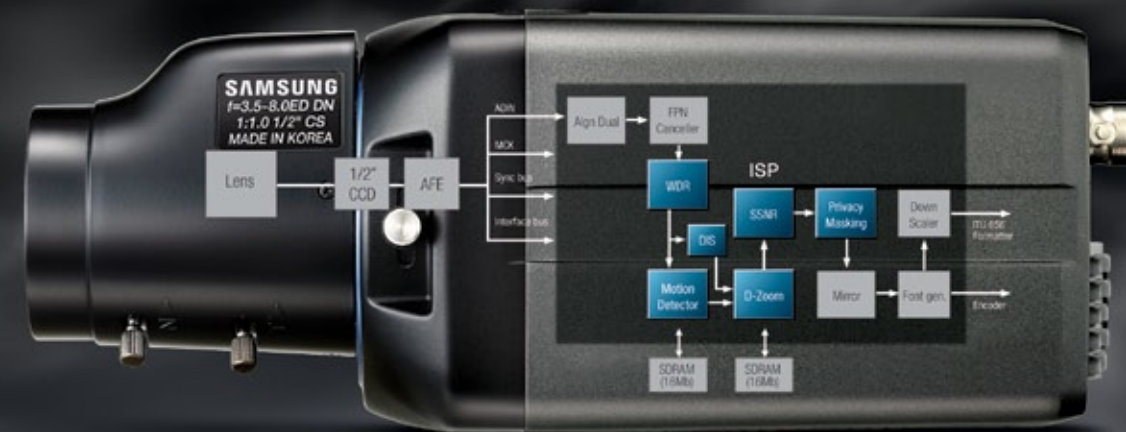
**Free from the limitations
set by darkness!**

4th generation high-tech DSP
for versatile high resolution surveillance **SV IV**

The SV IV is a 4th generation up-to-date DSP chipset technology of the Super Vision series which is developed exclusively by Samsung Techwin. The SV IV performs various surveillance functions with the world's best horizontal resolution and low level image quality using ultra precise image analyzing technology, 3 dimensional noise reduction technology and Adaptive image processor technology.



SV IV Powerful DSP Engine



SHC-745

- Best color resolution of 560TV lines of its kind
- Built-in next generation DNR, 3 dimensional filter method (SSNR II)
- 24 hour clear image through ICR Day & Night function
- Max. 256X Sens-up, Super low light level of 0.05Lux
- User-friendly Multi-language OSD support
- DIS image shaking correction, 10X digital zoom
- Free area settings of BLC, Strong backlight blocking HLC
- Privacy masking for up to 8 areas, MD
- OSD remote control via RS-485



Ultra Low Illumination Capability Brightening Darkness



1/2" High Sensibility **CCD**, Ultra Low Illumination **0.05Lux**

The SHC-745 is excellent in detecting lights in poor lighting conditions by increasing the sensitivity of the camera through a 1/2" CCD sensor, and performing ultra low illumination of 0.05Lux in color mode.



Conventional Camera



SHC-745



Powerful **SSNR II** Superb Quality Low Illumination Images

The SHC-745 enables clear ultra low illumination images using a powerful SSNR II function with the 3D DNR method. Long-term recording is available for recording devices, e.g. DVR enabling a decrease in the storage capability of images by blocking video dragging and minor noises.



SSNR Off



SSNR On



24 Hour Surveillance through **ICR Day & Night Function**

The SHC-745 produces high quality images through an ICR Day & Night function by automatically switching to optimal surveillance mode in response to illumination changes in day and night.



Day



Night

1/2" Ultra Low Light High Resolution Camera **SHC-745**

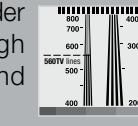


High Resolution, Optimal Image



Best color **560TV** lines of its kind, black and white **700TV lines** resolution

The SHC-745 with SV IV achieves clear image surveillance through the best 560TV lines color horizontal resolution of its kind, using exclusive image processor technology which changes the bandwidths of luminance signals adaptively according to conditions of the areas under surveillance. The SHC-745 has a high resolution of 700TV lines in black and white mode.



EIAJ Test Chart



Conventional Camera



SHC-745



DIS Image Shaking Correction

The SHC-745 ensures clear compensation of camera shake through the Digital Image Stabilizer (DIS).



DIS Off



DIS On



Clear Images with **S/N Ratio of 52dB**

The SHC-745 can deliver clean and clear images with an improvement in the S/N ratio to 52dB.



Conventional Camera



SHC-745