



EH8100 Series Enclosure

SPECIALTY, OUTDOOR, PRESSURIZED

Product Features

- 4- or 6-Inch Diameter
- For Use With Cameras With Fixed Focal Length or Motorized Lenses
- Indoor/Outdoor Applications
- For Use with Fixed Mount or Pan/Tilt
- Meets NEMA Type 6 and IP67 Standards
- Thermostat Controlled Heater(s) Standard Feature
- Easy Access for Service and Installation
- Legacy®-Compatible Version Available (EH8106L Only)



EH8106 ENCLOSURE



ENCLOSURE WITH SUN SHROUD

The **EH8100 Series** are sealed and pressurized outdoor enclosures designed to protect CCTV cameras operating in adverse environmental conditions.

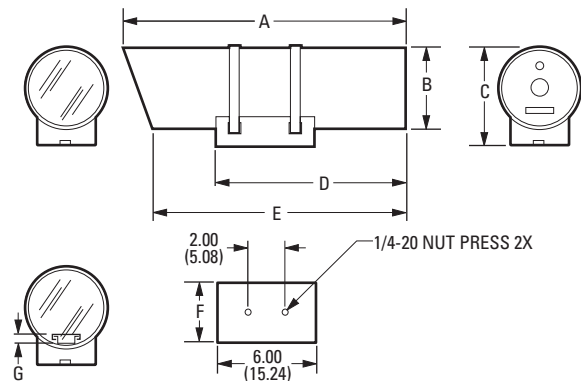
The **EH8100 Series** have lens preset capabilities and are designed to accept CCD cameras with fixed focal length or motorized zoom lenses.

The enclosure is factory sealed and pressurized with dry nitrogen to 5 psi. Should the camera or lens require servicing, the enclosure may be easily recharged in the field. A relief valve prevents overcharging of the enclosure.

The **EH8100 Series** is constructed of aluminum and features an adjustable mounting cradle, sled and track assembly for camera mounting, and a T-handle on the rear plate to facilitate removal for easy access to the camera and lens. Power, video, and lens control cables are routed through an MS-type connector on the rear of the enclosure.

An optional sun shroud is available that helps protect the enclosure from direct sunlight and reduces internal temperature by approximately 10-15° F (6-10° C).

The **EH8100 Series** can be used in fixed mount applications or with a medium-duty pan/tilt, such as our PT570 Series.



	A	B	C	D	E	F	G
EH8104	18.00 (45.72)	4.50 (11.43)	5.50 (13.97)	12.50 (31.57)	17.00 (43.18)	3.00 (7.62)	.92 (2.33)
EH8106	22.00 (55.88)	6.50 (16.51)	7.00 (17.78)	13.00 (33.02)	20.00 (50.80)	7.00 (17.78)	.88 (2.23)

NOTE: VALUES IN PARENTHESES ARE CENTIMETERS;
ALL OTHERS ARE INCHES.



DataFAX
SPEC: 2410
MANUAL: 214076

C410 / REVISED 3-03

IP67



International Organization
for Standardization;
Registered ISO 9001



TECHNICAL SPECIFICATIONS

MODELS

EH8104	Pressurized enclosure with heater, 4-inch (10.16 cm) inside diameter x 17-inch (43.18 cm) lower body length
EH8106*	Pressurized enclosure with heaters, 6-inch (15.24 cm) inside diameter x 20-inch (50.8 cm) lower body length

*For applications requiring an integrated positioning system, see our Pressurized Legacy Series.

ELECTRICAL

Input Voltage (for Heaters)	120 VAC (230 VAC optional) for heaters. Factory-wired for 120 VAC; must specify 230 VAC at time of order
Power Consumption (for Heaters)	40W (EH8104) 80W (EH8106) Heater(s) are thermostatically controlled to activate on at 40°F (4°C) and off at 60°F (15°C)
Input Connector	Souriau 85107E2016P, 16-pin jam nut, panel mount receptacle. (Souriau 85106EC2016S, MS-type mating connector supplied.)

Maximum Cable Distances (120 VAC)

	EH8104	EH8106
16 AWG (1.5 mm ²)	4,477 ft (1,365 m)	2,238 ft (682 m)
18 AWG (1.0 mm ²)	2,821 ft (860 m)	1,410 ft (430 m)
20 AWG (0.5 mm ²)	1,773 ft (540 m)	886 ft (270 m)

(230 VAC)

16 AWG (1.5 mm ²)	16,449 ft (5,014 m)	8,224 ft (2,507 m)
18 AWG (1.0 mm ²)	10,364 ft (3,159 m)	5,182 ft (1,579 m)
20 AWG (0.5 mm ²)	6,514 ft (1,985 m)	3,257 ft (993 m)

MECHANICAL

Front Window	Tempered glass, 0.225-inch (5.71 mm) thick
Camera Mounting	Multiple mounting holes on camera sled
Maximum Camera and Lens Size	Accepts camera and lens combinations** (including BNC connector) up to: EH8104 2.50" H x 2.50" W x 14.00" L (6.35 x 6.35 x 35.56 cm) or 14.00" L x 3.00" diameter (35.56 x 7.62 cm) EH8106 4.00" H x 4.00" W x 18.00" L (10.16 x 10.16 x 45.72 cm) or 18.00" L x 5.00" diameter (45.72 x 12.7 cm)
Enclosure Mounting	Adjustable cradle secured with stainless steel bands
Purge Fitting	Standard Schraeder valve to allow enclosure to be filled with dry nitrogen
Purge Relief Fitting	Prevents over pressurization of enclosure

**Assumes lens is fully extended.

GENERAL

Construction	Aluminum
Finish	Gray polyester powder coat
Unit Weight	
EH8104	8 lb (3.62 kg)
EH8106	15 lb (6.79 kg)
Shipping Weight	
EH8104	11 lb (4.98 kg)
EH8106	18 lb (8.15 kg)

ENVIRONMENTAL

Ambient Operating Temperature	-40° to 122°F (-40° to 50°C) with heater(s)
Vibration	5 to 60 Hz with 0.082-inch total travel (15 g's at 60 Hz). From 60 to 1,000 Hz, 5 g's rms with random vibration
Altitude	Sea level to equivalent of 10,000 ft (32,800 m)
Acoustic Noise	Operates in 150 dB acoustic noise environments
Humidity	Up to 100% relative humidity. Standard Schraeder and pressure relief valves provide positive internal pressure with dry nitrogen

CERTIFICATIONS/RATINGS

- UL Listed (except models with 230 VAC heaters)
- CE, Class A
- Meets NEMA Type 6 standards
- Meets IP67 standards

OPTIONAL ACCESSORIES

Sun Shroud	SS8004	Sun shroud for EH8104 enclosure
	SS8006	Sun shroud for EH8106 enclosure
Other	EH25/8104ORKIT	EH8104 O-ring kit; includes desiccant bags and lubricant
	EH8006ORKIT	EH8106 O-ring kit; includes desiccant bags and lubricant
	EH8000RKIT	Dry nitrogen recharging kit (non-refillable)
	PSKIT8100	Pressure sensor kit. Provides a contact closure that can be wired to trigger an alarm when internal pressure drops to 2 psi.

RECOMMENDED MOUNTS

Wall	EM22	Medium duty wall mount; maximum load 40 lb (18.14 kg)
Ceiling/Pedestal	MM22	Medium duty ceiling/pedestal mount maximum load 40 lb (18.14 kg)

RECOMMENDED PAN/TILTS

PT570 Series	Medium duty pan/tilt; maximum load 40 lb (18.14 kg)
PT1250 Series	Heavy duty pan/tilt; maximum load 100 lb (45.4 kg)



Pelco Worldwide Headquarters:

3500 Pelco Way, Clovis, California 93612-5699 USA

USA & Canada Tel: (800) 289-9100 • FAX (800) 289-9150 • DataFAX (800) 289-9108

International Tel: (559) 292-1981 • FAX (559) 348-1120 • DataFAX (559) 292-0435

www.pelco.com

Specifications subject to change without notice.
©Copyright 2003, Pelco. All rights reserved.