

DX7100 Series Digital Video Recorder

8/16 CAMERA INPUTS, 120-480 GB HARD DRIVE

PRODUCT FEATURES

- Multiple Camera Displays for Live Viewing or Playback While Recording
- Continuous, Motion Detection, Alarm, Pre-Alarm, and Scheduled Recording Modes
- High-Speed Searching (Date, Time, and Alarm)
- Playback by Date, Time, and Camera
- 8 Alarm Inputs and 8 Control Outputs
- Hardware Watchdog
- Recognition of Image Alteration
- Camera Pan/Tilt/Zoom Control Via RS-422
- Remote Viewing, Access, and Control Via PSTN, and TCP/IP (LAN/WAN/INTERNET)
- Built-in CD-RW Drive



- Windows® 2000
- CMS Central Management Software (Optional)
 - Connect to a Maximum of 100, 8- or 16-Channel DX7100 DVRs
 - Display Cameras from Different Sites on One Screen
 - Observe up to Forty-eight Cameras at the Same Time
 - Motion, Sensor, and Site Connection Logs

Pelco's **DX7100 Series** Digital Video Recorder (DVR) has built-in video motion detection, alarm-based recording, and relay output controls. Models range from an eight-channel, single 120 GB HDD to a sixteen-channel unit with 480 GB.

Record and display images from one, four, nine or sixteen camera inputs to a single SVGA monitor. Operate pan/tilt/zoom functions on controllable cameras such as Pelco's Spectra® and Esprit® Series. The DVR also features remote site access (through software), individual remote site settings, and multiple password levels.

The **DX7100 Series** DVR's recording features make it easy to customize a recording schedule. Continuous, motion, and/or sensor detection can be programmed using up to 24 available group schedules. Eight alarm inputs are available to trigger alarm recording when a signal is received from a connected device. This input will tell the unit to start recording, or if it is already recording, to record at a higher speed. A pre-alarm recording function can be set to record images before the alarm sensor detects disturbances.

Each camera can be programmed to detect motion, including the capability to select up to 10 motion detection areas (per camera) and motion sensitivity.

Versatile high-speed search operations include time and date searching, index searching, skip searching, and alarm list searching.

Included with the **DX7100** is the **DX7100RX** single site connection software. The software allows remote site viewing of live and recorded video of a single connected **DX7100** site. Up to one hundred IP addresses and/or phone numbers can be registered for easy site connection. Software features include search, PTZ, and relay capabilities.

Optional multiple site connection software is also available. The **CMS** Central Management Software can simultaneously connect to one hundred, eight- or sixteen-channel **DX7100** digital video recorders. Each camera can be individually programmed to display in live or playback mode. This feature allows the user to view live video and search multiple sites at the same time. Other features include event logging, PTZ, and relay capabilities.



DataFAX
SPEC: 2641
MANUAL: Not Available through DataFAX

C641 / REVISED 11-03



TECHNICAL SPECIFICATIONS

ELECTRICAL/VIDEO/AUDIO

Input Voltage (Power Supply)	100-240 VAC switchable, 50/60 Hz, 210 watts
Signal System	NTSC/PAL
CPU and RAM	
DX7108	Celeron, 256 MB
DX7116	PIII, 256 MB
Image Size	
NTSC	320 x 240
PAL	352 x 288
Compression	M-JPEG
Video Inputs	8 or 16, depending on model
Video Outputs	2 (1 SVGA, 1 analog)
Alarm Inputs	8
Control Output	8
Remote Control	Full remote control via PSTN, ISDN, TCP/IP
Pan/Tilt/Zoom Control	RS-422 interface to receivers

MECHANICAL

CDRW (Internal)	
Data Transfer Rate	Write: 52X (7.8 MB per second) Rewrite: 24X (3.6 MB per second) Read: 52X maximum (7.2 MB per second)
Video Playback (VCD)	32X maximum (6 MB per second)
Connectors	
BNC	Video inputs
6-pin MiniDIN	PS/2 mouse and keyboard
Push-in	Alarm inputs, control outputs
9-pin D-type	COM 1 and 2
15-pin D-type	SVGA monitor port
25-pin D-type	Printer port
BNC	Analog or CCTV monitor
RJ-45	TCP/IP, LAN/WAN
USB	Two ports available for external backup device

GENERAL

Operating Temperature	50° to 95°F (10° to 35°C)	
Relative Humidity	Maximum 80%, non-condensing	
Dimensions	7" H x 17" W x 18" D (4 RUs) (17.78 x 43.18 x 45.72 cm)	
Unit Weight (Approximate)	Unit	Shipping
DX7108-120, DX7116-120	39.2 lb (17.8 kg)	50 lb (22.7 kg)
DX7108-240, DX7116-240	43.2 lb (19.6 kg)	54 lb (24.4 kg)
DX7108-360, DX7116-360	47.2 lb (21.4 kg)	58 lb (26.3 kg)
DX7108-480, DX7116-480	51.2 lb (23.2 kg)	62 lb (28.1 kg)

CERTIFICATIONS

- CE, Class B
- UL Listed
- cUL Listed to Canadian safety standards
- FCC, Class B

RECOMMENDED PC REQUIREMENTS

DX7100RX (Supplied)

CPU	Pentium® III processor, 700 MHz
RAM	128 MB
HDD Space	10 MB Free Space
O/S	Windows® 98, Windows 2000, Windows XP, and Windows NT® 4.0 (SP6)
Acceleration	DirectX® 7.0 or Higher
Monitor	15-inch or higher
Image Size	1024 x 768 as a minimum
Color	True color (32 bit)
Approved VGA Card List*	ATI Rage™ 128, ATI Rage 128Pro, NVIDIA™ RIVA TNT2™ Model 64, NVIDIA RIVA TNT2 Model 64 Pro, NVIDIA GE Force™2 MX400, Savage4, or Savage4 Pro

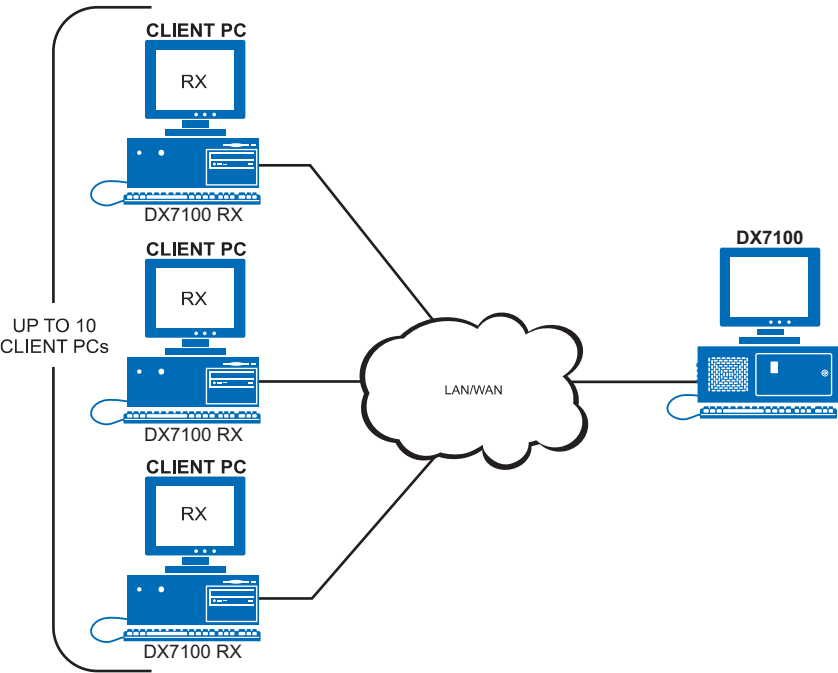
CMS (Optional)

CPU	Up to 48 sites Pentium IV 1.2 GHz or higher Up to 100 sites Pentium IV 1.6 GHz or higher
RAM	256 MB or higher
NIC	10/100
HDD Space	50 MB free space
O/S	Windows 2000 Professional (SP2), and Windows XP Professional
Acceleration	DirectX 7.0 or higher
Monitor1	7-inch or higher
Image Size	1280 x 1024 as a minimum
Color	True color (32 bit) as a minimum
Approved VGA Card List	GeForce2 MX400 32 MB, GeForce4 MX440 32 MB, ATI RADEON™ 7000 64 MB, and ATI RADEON 7500 64 MB

*All recommended VGA cards should have a minimum of 16 MB of video RAM, 32 MB is preferred.

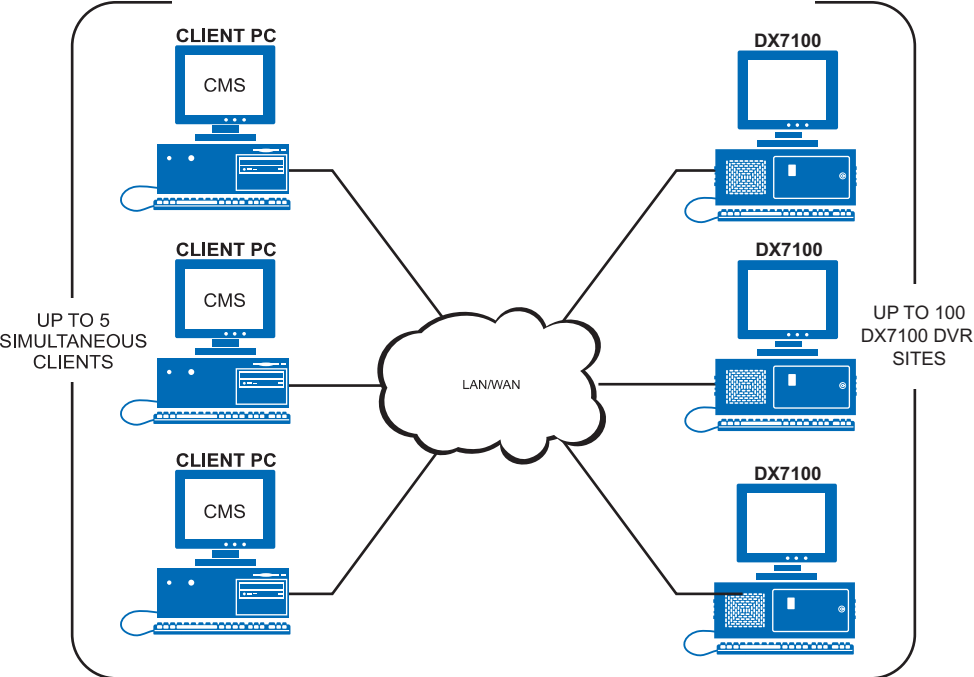
DX7100RX Single Site Connection Software (Supplied)

- Connect to one hundred sites – one at a time
- Live view mode
- Search video mode
- IP address and/or phone number connections
- 1, 4, 9, or 16 display options



CMS Multiple Site Connection Software

- Connect to one hundred sites simultaneously
- Live view and search video at same time
- Search multiple sites at the same time
- Live scheduling
- Event logging
- Motion and sensor screen display
- IP address
- 1, 4, 9, 16, 25, or 48 display options



TECHNICAL SPECIFICATIONS

MODELS

Model Number	No. of Camera Inputs	Total HDD Space
DX7108-120	8	120
DX7108-240	8	240
DX7108-360	8	360
DX7108-480	8	480
DX7116-120	16	120
DX7116-240	16	240
DX7116-360	16	360
DX7116-480	16	480

Supplied Accessories: Keyboard, PS/2 mouse, RS-422 converter, Windows® 2000, DX7100RX remote site software, and rack ears. (Monitor not supplied with DX7100 Series DVR.)

OPTIONAL ACCESSORIES

CMS

Central management software can simultaneously connect to a maximum of one hundred, sixteen-channel DX7100 digital video recorders.



Pelco Worldwide Headquarters:

3500 Pelco Way, Clovis, California 93612-5699 USA

USA & Canada Tel: (800) 289-9100 • FAX (800) 289-9150 • DataFAX (800) 289-9108

International Tel: (559) 292-1981 • FAX (559) 348-1120 • DataFAX (559) 292-0435

www.pelco.com

Spectra® and Esprit® are registered trademarks of Pelco.
Windows®, Windows NT®, and DirectX® are registered trademarks of Microsoft Corporation.
NVIDIA RIVA TNT2™ and GeForce™ are trademarks of the NVIDIA Corporation.

ATI Rage™ and RADEON™ are trademarks of ATI Technologies Inc.

Specifications subject to change without notice.

©Copyright 2003, Pelco. All rights reserved.