



\* This logo mark is issued by the IPv6 Ready Logo Program Committee, an IPv6 promotion group established mainly by the IPv6 Forum.

## View Places That You Couldn't Even See Before

Meet our new dome-shaped, ceiling-mounted network camera with a zoom lens.

A 4.6 zoom makes it possible to check places in detail.

Its 73° wide viewing angle allows you to recognize much broader range at the single sight.

Thanks to its PoE\*1 capability, the camera can be installed in places where it is difficult to provide power, like on factory and warehouse ceilings, or near a building entranceway or elevator hall.

This lets you grab every business possibility by breaking distance and time barriers with Zero Distance Management\*2.

\*1 PoE (Power over Ethernet) supplies power through an Ethernet Cable.

\*2 For details, see the bottom of this page.

**See There**  
When You Can't Be There™



(Using the optional ceiling flush mount bracket.)



Stores



School



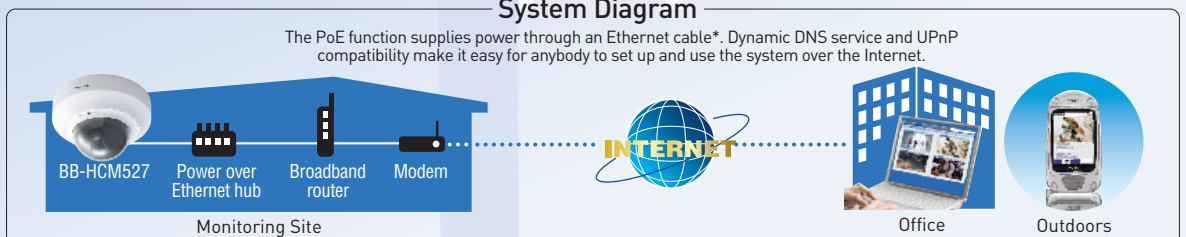
Restaurant

### Zero Distance Management

Zero Distance Management is a new business style made possible by Panasonic network cameras. It allows safe, smooth, economical business management that is totally free from conventional distance and time limitations.

### System Diagram

The PoE function supplies power through an Ethernet cable\*. Dynamic DNS service and UPnP compatibility make it easy for anybody to set up and use the system over the Internet.



\*An optional AC adaptor can also be used.

# Achieving Zero Distance Management with a Variety of Functions



## Control

### Wide-angle Lens

The use of a 73° wide-angle lens lets you monitor a wide area in a single view. The coverage can be increased even more by combining pan and tilt operation.

The viewing angle



BB-HCM511 (54°) BB-HCM527 (73°)

## Monitor

### Simultaneous MPEG-4\*1 and JPEG

Cameras simultaneously send MPEG-4\*1 images in three resolutions (VGA\*2, QVGA, and SCIF), and JPEG images in the same three\*5 resolutions in favor motion, standard, and favor clarity image-quality types. MPEG-4 is recommended for viewing smooth motion images, and JPEG is recommended for recording higher quality images.

\*1 MPEG-4 is not applicable on a cell phone.  
\*2 When viewing in VGA, only MPEG-4 playback offers a maximum of 30 fps.

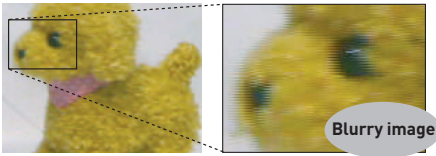
#### MPEG-4 Visual License

When installing the MPEG-4 viewer program on additional PCs, please purchase additional licenses (Model No. BB-HCA5A for USA, BB-HCA5CE for others).

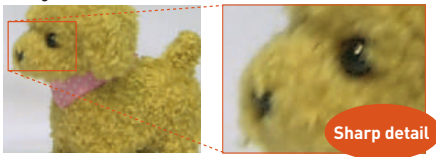
### Progressive scan

Progressive scanning eliminates the blurring that often occurs with interlaced scanning, to produce a high-quality image.

#### Interlaced scan



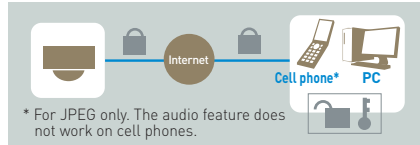
#### Progressive scan



## Connect

### SSL support

Recorded data is sent in encrypted form, making it very difficult for someone else to "eavesdrop" on the network.



\* For JPEG only. The audio feature does not work on cell phones.

## Capture

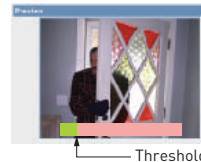
### Motion Detection Function

This function detects changes by reacting to a camera threshold or sensitivity that is set in advance on the PC. Captured images can also be stored temporarily in the camera\*3 or sent to you by e-mail\*4 or FTP data transfer\*5.

\*3 A maximum of approximately 350 images (320 x 240 pixels) can be stored in the camera.

\*4 POP before SMTP authentication and SMTP authentication (PLAIN, LOGIN and CRAM-MD5) are supported.

\*5 The sensor's detection history can also be e-mailed to you once a day at a preset time.



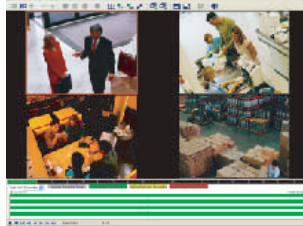
## Store

### Recording program\*6

Video data can be downloaded to a PC using optional software. In stores, this allows for more detailed monitoring of customer behavior, and of employee attitudes toward customers, information that cannot be obtained from still images alone.

\*6 Recording is possible for only one camera. To record images from multiple cameras, use the BB-HNP11 or BB-HNP15.

#### Playback screen (BB-HNP15)



## Others

### Install just about anywhere Easy PoE power supply

The power is supplied through the Ethernet cable, so the network camera can be installed on the ceiling very easily, since the additional work for the power outlet is not required.

PoE IN port



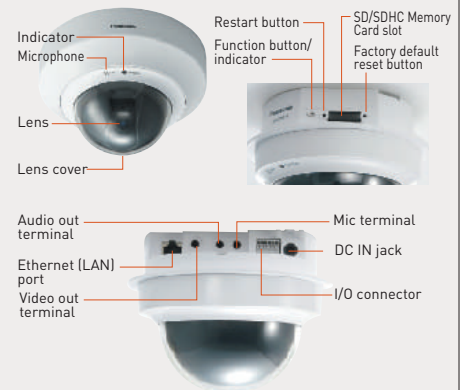
### Ceiling flush mount bracket (option)

Using this optional bracket, you can mount everything except the lens neatly inside the ceiling space.

(Model No. BB-HCA10A for USA, BB-HCA10CE for others)



## Part Names



## Specifications [BB-HCM527]

Network camera		Server		Terminal	
Zoom	4.6x zoom (2.3x optical, 2x digital)	Image compression	JPEG [Motion JPEG], MPEG-4	Network interface	Ethernet (10Base-T/100Base-TX)
Viewing Angle	Horizontal: tele: 32° [optical] / 16° [digital], wide: 73°	Video resolution	640 x 480, 320 x 240 [default], 192 x 144	External I/O connector	Input: 2, output: 1
	Vertical: tele: 24° [optical] / 12° [digital], wide: 55°	Image quality	JPEG (favor clarity, standard, favor motion), MPEG-4	Video output	Analog composite (NTSC/PAL)
Pan Angle / Tilt Angle	Pan: -175° up to +175°, Tilt: 0° up to +82°	Frame rate*8	Max. 30 frames/sec. (640 x 480*, 320 x 240, 192 x 144)	Audio output	3.5 mm stereo mini jack (output is mono)
Revolving speed	Pan: max. 300°/sec, Tilt: max. 80°/sec	Security	User ID/Password, SSL	External microphone input	3.5 mm mini jack
Sensor Type	1/3.6 inch 1/2 [new] MAICOVICON*9 approx. 370,000 pixels	Supported protocols	IPv4/IPv6 Dual-Stack, IPv4: TCP, UDP, IP, HTTP, FTP, SMTP, DHCP, DNS, ARP, ICMP, POP3, NTP, UPnP, SMTP, Authentication, RTP, RTSP*10, RTPC, SSL, HTTPS, TLS, IPv6: TCP, UDP, IP, HTTP, FTP, SMTP, DNS, ICMPv6, POP3, NDP, NTP, RTP, RTSP*10, RTPC, SSL, HTTPS, TLS	SD Memory Card slot	Full size (operation guaranteed for 8 GB and 4 GB SDHC Memory Cards, for 2GB, 1GB, 512MB, 256MB, 128MB and 64MB SD Memory Cards)
Lens focal point	Fixed (focal range: 0.75 m to ∞)	User access limit	Max. 30 simultaneous accesses (Max. 10 accesses in JPEG mode with sound playback or 5 accesses in MPEG-4 mode, with HTTPS communication) [registration: max. 50 users; each user can be assigned User ID/password]	General	
Lens brightness	F1.9 [wide] - F2.8 [tele]	Buffered images*11	Approx. 350 images (320 x 240) • standard image quality (16KB Per image) • with time display *without using SD/SDHC Memory Card	Operating temperature	0°C to +40°C (+32°F to +104°F)
Required light intensity	2 to 100,000 lux in Color Night View mode: 0.2 to 100,000 lux)	Image transfer method	SMTP*12, FTP, HTTP	Operating humidity	20% to 80% [No Condensation]
Scanning system	Progressive scan	Image buffer/transfer triggers	Alarm, timer or motion detection	Dimensions [H x W x D]	153 x 115 x 153 mm (6 x 4.9/16 x 6 inches)
Audio				Weight (only the unit)	670g (1.48lb.)
Audio Communication	2-Way half duplex			Power Supply	PoE: 48 V, IEEE802.3af-compliant Power over Ethernet AC adaptor (option): input 100 - 240 V AC, output 12 V DC
Audio Compression	ADPCM 32 kbps			Consumption	PoE: 4.4 W [wait], max. [pan-scan]: 7.9W AC adaptor: 4.4W [wait], max. [pan-scan]: 8.5W
Audio Bandwidth	300 Hz - 3.4 kHz				
Audio Input	Built-in microphone or external microphone input terminal				
Audio Output	Audio line output terminal for external speaker				
Audio Reception Method	ActiveX				
Audio Reception Decoding	ActiveX				

\*7 New Matsushita Advanced Image Converter for Vision Construction; Original image sensor developed by Matsushita Electric Industries. \*8 The frame rate may slow down depending on the network environment, PC performance, image quality, SD memory recording, when color night view mode is activated, etc. \*9 For MPEG-4 only. Not applicable to JPEG. \*10 Only still images in JPEG format can be displayed on a cell phone. \*11 The maximum number of frames changes depending on the image quality and what object you buffer. \*12 POP Before SMTP Authentication and SMTP Authentication (PLAIN, LOGIN and CRAM-MD5) are supported.