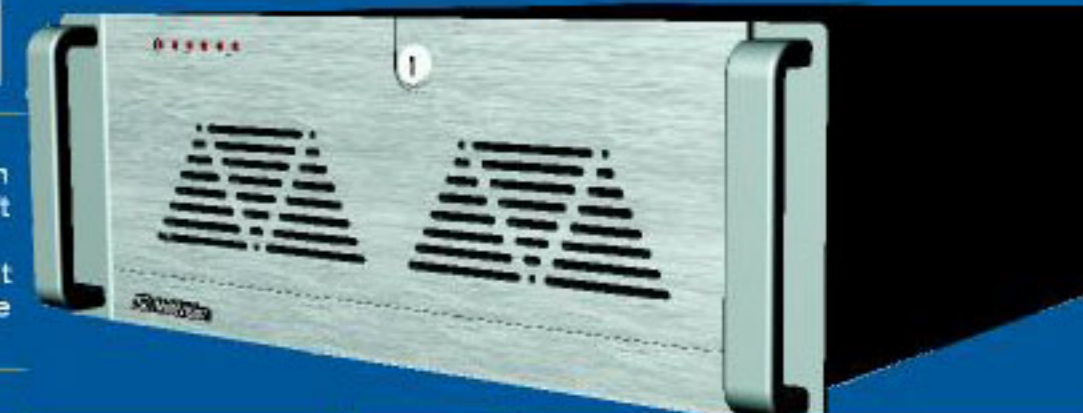


UCW SERIES UNET CLIENT WORKSTATION

TOTAL MANAGEMENT SOLUTION FOR DIGITAL VIDEO NETWORK SYSTEM

UCW (Unet Client Workstation) is a digital video management system developed by MultiVision that runs parallel with MultiVision NetServer range of products. UCW is a universal PC based software program which is user-friendly and operates under Microsoft Windows with utilisation of a computer keyboard and mouse.

UCW enables controller to link and monitor NetServers at different location. UCW is a unique concept developed by MultiVision that integrated digital video recording and remote surveillance system. UCW provides a flexible and cost-effective solution far beyond the conventional digital video recorder.



General System Features

- * Complete, easy-to-install, user-friendly but powerful video surveillance management system
- * Online viewing, recording, playing back (or any operation combination) of up to 36 remote sites simultaneously via LAN, Internet, ISDN and PSTN
- * User friendly and easy-to-control on-video pan/tilt/zoom
- * Multi-view screen display: 1, 4, 7, 9, 10, 13, 16, 25 or 36 live or play back images at once
- * Indication of camera locations as icons on the maps for easy selection and identification
- * Windows 98SE/ME/2000 compatible
- * CIF resolution Video display (PAL:384x288; NTSC:320x240)
- * No loss of quality with remote transmission
- * No affect on the local recording and operation
- * Receiving alarm alert notification from any of the remote NetServer stations
- * Re-sizeable digital zoom of up to 30x for live or playback video
- * MPEG-4 compression technology
- * Configurable maps and camera icons
- * Camera touring – automatically sequence through multiple cameras from different remote sites
- * Programmable overlay indication of time, date, station and camera names
- * Multilingual capability
- * Remote viewing password and user control management

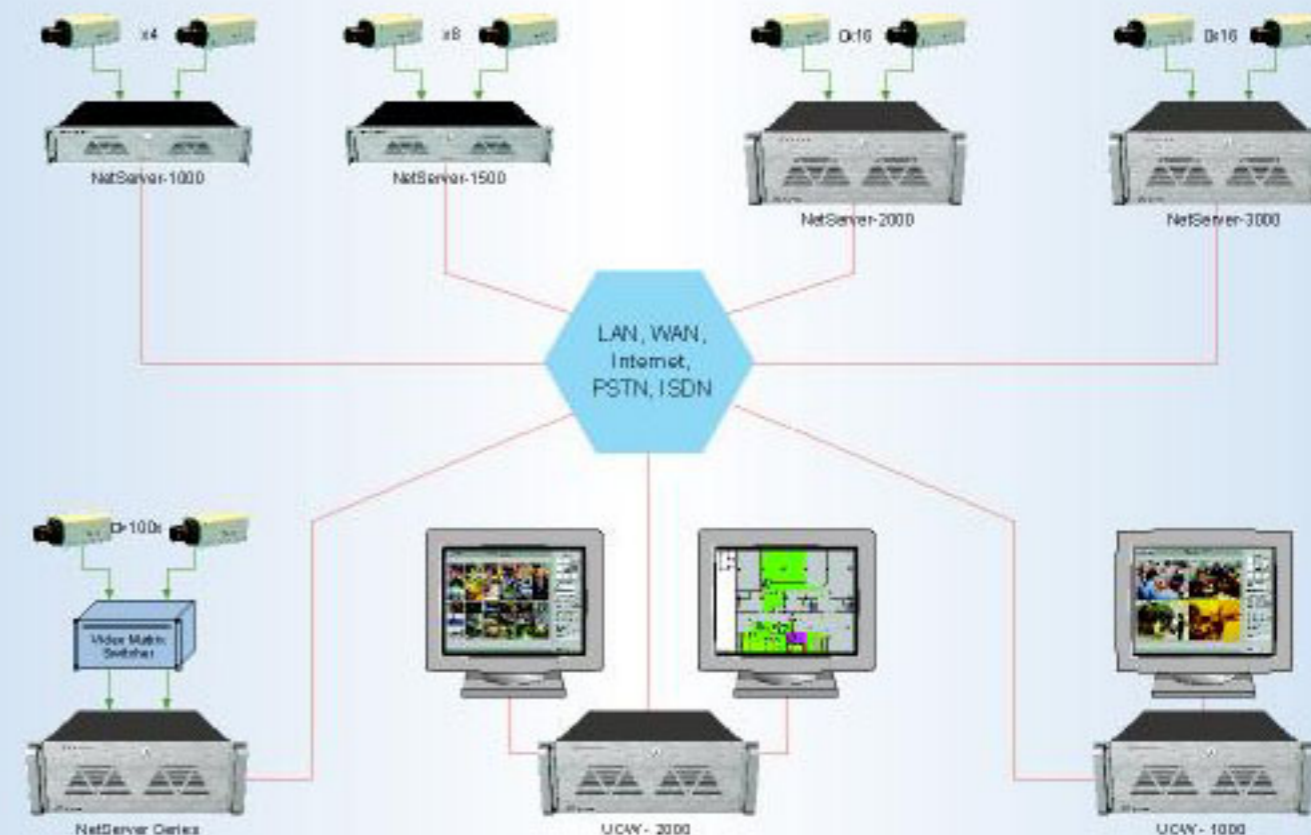
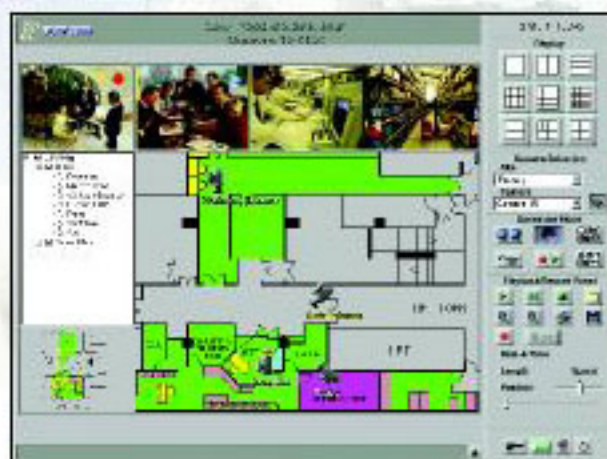
User Friendly GUI

Operation and control are simple with drag, point and click of the PC mouse. User can view live video(s) and control P/T/Z camera from anywhere in the world. The map of the entire monitoring area can be shown on screen. User can zoom into any particular area to view the details such as the location of the cameras and alarm detectors. By clicking the relevant area name on a hierarchical list on the side, the user can also zoom out to the global view of the map.

Location of the cameras from different sites in the system can be clearly shown on all of the maps. User can point and click with the mouse on the camera icon to view the live video captured by any particular camera without remembering the camera and site numbers.

Viewing on Demand

UCW allows you to view live video(s) and recorded image(s) from any particular sites, anytime, anywhere. Viewing, recording and playing back images can be performed simultaneously on up to a maximum of 36 display windows



System Diagram for UCW

Dual display operation

UCW-2000 supports dual display operation (e.g. one monitor is for video display and selection operation while the other monitor is used for enlarging the particular video image or show map display) that provides easy, fast and convenient operation for the operators.

The operator can select any particular camera image (live or playback image) to easily enlarge and pop up on the secondary monitor for further investigation.

For better view, the display map can be shown on the secondary monitor for better and complete view of camera locations while the primary monitor is used for displaying the camera image(s).



Technical Specifications

UCW - 500* **UCW - 1000** **UCW - 2000**

Video Features

Maximum of remote Live videos	4	16	36
Max. playback channels	1	16	36
Video Display Resolution	384x288 (with enhancement)	384x288 (with enhancement)	384x288 (with enhancement)
Multi-view screen display formats	Single, quad	1,4,7,9,10,13,16	1,4,7,9,10,13,16,25,36
Overlays for Time, Date, station name and camera ID	Yes	Yes	Yes
Refresh rate	Up to 4 real-time display channels	Up to 9 real-time display channels	Up to 16 real-time display channels
Dual display operation	No	No	Yes
Programmable Camera touring— automatically cycles through multiple cameras from multiple sites	Yes	Yes	Yes
Full Screen mode (hiding all the control panels and buttons)	Yes	Yes	Yes
Re-storable digital zoom of up to 30x for live or playback video	Yes	Yes	Yes

Recording Features

Max. Recording channels	4	16	36
Video Recording Resolution	384x288 (with enhancement)	384x288 (with enhancement)	384x288 (with enhancement)
Compression codec	MPEG-4 compression technology	MPEG-4 compression technology	MPEG-4 compression technology
Average frame size	2.5K (384 x 288 high resolution)	2.5K (384 x 288 high resolution)	2.5K (384 x 288 high resolution)
Recording speed	Up to 100 f/s	Up to 200 f/s	Up to 225 f/s
Circular recording mode	Yes	Yes	Yes
Playback from remote or local site(s)	Yes	Yes	Yes
Data Backup Option	Yes	Yes	Yes

Playback Features

Max Multiple playback screen	1	16	36
Playback at different speed, shuttle forward and backward	Yes	Yes	Yes
Image capture, zoom, save and printout	Yes	Yes	Yes
Fast playback search by site, camera ID, time and date	Yes	Yes	Yes

Alarm Features

Simultaneous recording and playback and on-line viewing	Yes	Yes	Yes
Pan / Tilt / Zoom	Yes	Yes	Yes
Dual display with Map, camera icons indications	No	No	Yes
Alarm alert notification from remote site(s) with sound	Yes	Yes	Yes
History log of alarm event	Yes	Yes	Yes
Works for all NetServer series	Yes	Yes	Yes
Compatible with Win98SE, ME & Win2000	Yes	Yes	Yes
Remote viewing user and password control	Yes	Yes	Yes
Configuration for P/T/Z Priority and camera masking	No	No	Yes
Remote control P/T/Z	Yes	Yes	Yes
Interface with UMS	No	No	Yes
Chinese language GUI (Traditional/Simplified)	Yes	Yes	Yes

Standard Configuration

CPU	Pentium IV 1.4GMHz or above
Hardware Configuration	80GB HDD, 3.5" FDD, 128MB RAMBUS, 8x8x32 CD-R/RW, built-in 10/100M LAN card, Dual Head display
Casing	Rack-mount chassis
Operation temperature	0°C to 55°C
Max relative humidity	10% to 85% (relative)
Operating system	Win98 SE / Windows 2000 (option)

* NOTE: UCW-500 comes with NetServer series DVR for free.

UCW can be ordered in software packages. The models for the software packages are as follows:

1. UCW-1000-SW UNET Digital Video Management Software
2. UCW-2000-SW UNET Digital Video Management Software

DISTRIBUTED BY



**UCW SERIES
UNET CLIENT WORKSTATION**
DIGITAL VIDEO MANAGEMENT SYSTEM

