

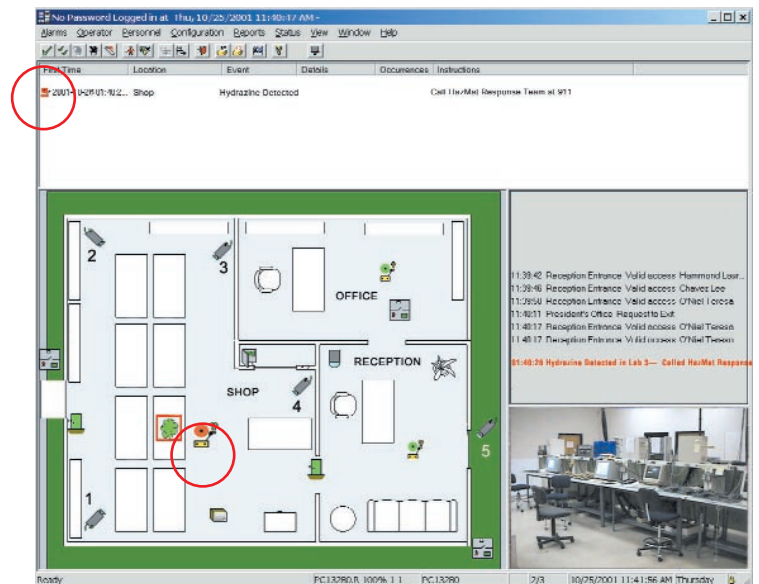
Chemical Detection



Chemical Detection System



Portable Mini-Ion Mobility Spectrometer (IMS) for military, fire department and commercial use, can be programmed to detect up to 30 different chemical compounds.



The MAXxess Chemical Detection Module includes a suite of chemical sensors integrated with the AXxess™ 202/NS system with flexible monitoring, custom alarm thresholds and initiated counter measures. With detection levels in the parts-per-billion range and detection times as low as 3 seconds, the integration of chemical sensing into the MAXxess Security Management software provides a new level of protection for your personnel and assets.

Detection devices include single compound detectors as well as fixed and portable detectors which are capable of detecting up to 30 individual substances simultaneously. These substances can be gases, explosives and narcotics.

Applications

IMS can be used for many applications where known gas monitors are less suitable:

- Selective and very sensitive detection of gases and vapors in chemical and petrochemical plants.
- ppb-level detection of ammonia and other gases in semiconductor production plants.
- Monitoring system for chemical warfare agents
- Waste disposal facilities.
- Leak detection in dangerous good stores.
- Terrorism counter-measure in public buildings and subway stations.

Chemical Detection Features

- Sensitivity in the ppb and low ppm range
- Detects over 1,000 chemical compounds and gases
- Detects drugs
- Detects explosives
- Small, remote, portable systems available
- Seamlessly integrates with MAXxess security systems

Benefits

- Rapid detection and notification time
- Automated system response to reduce exposure
- Automated data presentation for proper reaction

Chemical Detection Module

Specifications

ION MOBILITY SPECTROMETER

Rack mount

Dimensions:	130 x 480 x 350 mm (hwxwd)
Weight:	10kg
Display:	Integrated alphanumeric display of the compounds and their concentrations Display of the spectra by PC or oscillograph 4 – 20 mA signals for controlling
Alarms:	LED on front of display panel or via 4-20 mA and RS232 outputs
Range:	1000 X MDC
Ready for Operation:	Max. 1 hour after start of switching on
Deadtime:	0 s
Temperature of operation:	0 to 50° C
Moisture:	0 to 90% RH
Power Supply:	24 V DC
Power consumption:	Max 24 W

POLYTRON 2

Display:	LCD display 2 lines, 20 characters
Output	
Analog:	4 to 20 mA, 2-wire
Digital:	HART®
Warning Signal:	Fault signal every 10 seconds for 1 second
Maintenance signal:	4 mA + 1mA, 1 Hz modulation
Fault signal:	<3.2 mA
Power Supply:	16.5 to 30 V DC: <100 mW
Ambient Conditions	
Temperature:	-40° to +65° C / -40° to 150° F
Humidity:	0 to 100% r.h. non condensing
Enclosure:	GRP, IP 67/ NEMA 4; Pg. 13.5 cable gland
Size:	130 x 210 x 100mm 5.1" x 8.3" x 4" (hwxwd)
Weight:	approx. 1.8 kg/4.0 lbs.



MAXxess

An Odetics Company

www.maxxess-systems.com

MAXxess Systems Headquarters

1515 S. Manchester Ave.
Anaheim, CA USA
92802-2907
Tel + (1) 714 772 1000
800 842 0221
Fax + (1) 714 780 7592
Email sales@maxxess-systems.com

Service & Technical Support

Tel + (1) 714 772 1000
800 842 0221
Fax + (1) 714 780 7592
Email support@maxxess-systems.com

MAXxess Systems

Europe, Middle East, Africa

Fujitsu House
Lovelace Road
Bracknell, Berkshire
England, RG12 8SN
Tel +44 (0) 870 234 7654
Fax +44 (0) 870 234 7655
Email sales@maxxess-systems.com

Service & Technical Support

Tel +44 (0) 870 234 5992
Fax +44 (0) 870 234 7655
Email support@maxxess-systems.com

Information furnished by MAXxess is believed to be accurate and reliable. However, no responsibility is assumed by MAXxess for its use nor for any infringements of patents or other rights of third parties that may result from its use. No license is granted by implication or otherwise under any patent rights of MAXxess Systems, Inc. Specifications subject to change without notice.

© 2002 MAXxess Systems, Inc., Anaheim, CA USA
3606-CD Printed in the UK