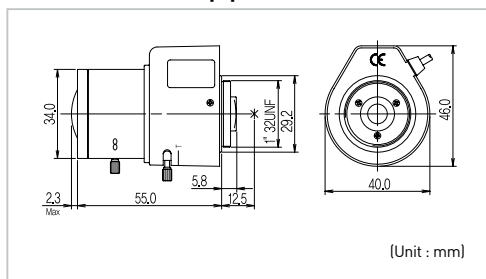


KL-2810D | VARIFOCAL LENS



Outward Appearance



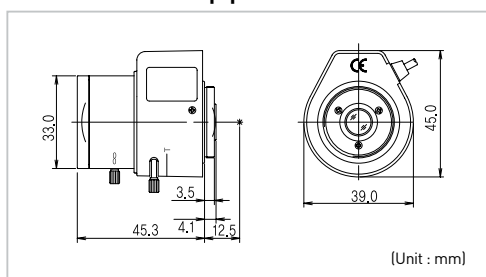
Specifications

General Spec		KL-2810D			
CCD Type	1/3"				
Focal Length	2.8~10.0mm				
Lens Mount	CS Mount				
MaxAperture Ratio	1 : 1.4 ~ 360				
Iris	Auto Iris				
Rear Focal Length	7.8 ~ 17mm				
Flange Back Length	12.5mm				
Angle of View	D	1/3"		1/4"	87.9° ~ 26.5°
	H				93.7° ~ 28.3°
	V				70.6° ~ 21.2°
Operation	Iris	Auto(F1.4 ~ 360)			
	Focus	Manual			
	Zoom	Manual			
Operating Voltage	Open	4.0V			
	Close	0.5V			
Operating Temperature	-20°C ~ +50°C				
Dimension	57.2(L) × 40.0(W) × 46.0(H)				
Weight	65g				

KL-3580D | VARIFOCAL LENS



Outward Appearance



Specifications

General Spec		KL-3580D			
CCD Type	1/3"				
Focal Length	3.5~8.0mm				
Lens Mount	CS Mount				
MaxAperture Ratio	1 : 1.4 ~ 360				
Iris	Auto Iris				
Rear Focal Length	8.4 ~ 14.2mm				
Flange Back Length	12.5mm				
Angle of View	D	1/3"		1/4"	76.2° ~ 33.2°
	H				80.7° ~ 35.4°
	V				60.0° ~ 26.5°
Operation	Iris	Auto (F1.4~360)			
	Focus	Manual			
	Zoom	Manual			
Operating Voltage	Open	4.0V			
	Close	0.5V			
Operating Temperature	-20°C ~ +50°C				
Dimension	45.3(L) × 39.0(W) × 45.0(H)				
Weight	57g				