

VCM-200A

20-Inch Diagonal Color Video Monitor With Audio



■ Description

The VCM-200A, 20-inch color monitor is perfect for all your general-purpose color requirements. The color monitor offers more than 350 TV line horizontal resolution with superior color reproduction.

The VCM-200A makes available loop-through VIDEO-IN and VIDEO-OUT BNC-type connections with a 75-ohm termination switch. An RCA-type AUDIO-IN is provided with a built-in 2 3/4" speaker.

All controls are front mounted and concealed under a door. These controls are for TINT, COLOR, BRIGHTNESS, CONTRAST and VOLUME. Also provided is a front mounted power switch is a mechanical-type which will allow the monitor to automatically return to an "on" condition when power is restored after a power outage.

The VCM-200A 20" color monitor is U.L. listed for both U.S.A. and Canada with F.C.C. approval.

The VCM-200A may also be utilized as a low-cost general purpose black and white monitor for use with black and white CCD cameras. This will allow the CCTV system to be upgraded to color camera in the future without the need to replace the monitor

■ Features

- NTSC/PAL Compatible
- 20" square CRT (19.2" actual viewing area)
- Horizontal resolution of over 350 TV lines
- BNC connector for VIDEO-IN/OUT (Loop-through)
- 75 ohm termination switch
- Audio input (RCA) with 2 3/4" speaker
- Utilizes concealed front mounted controls
- Full one-year warranty on all components
- Superior color reproduction
- Low-cost high performance
- U.L. listed and F.C.C. approved
- World Wide Power Input 90VAC-260VAC

VCM-200A

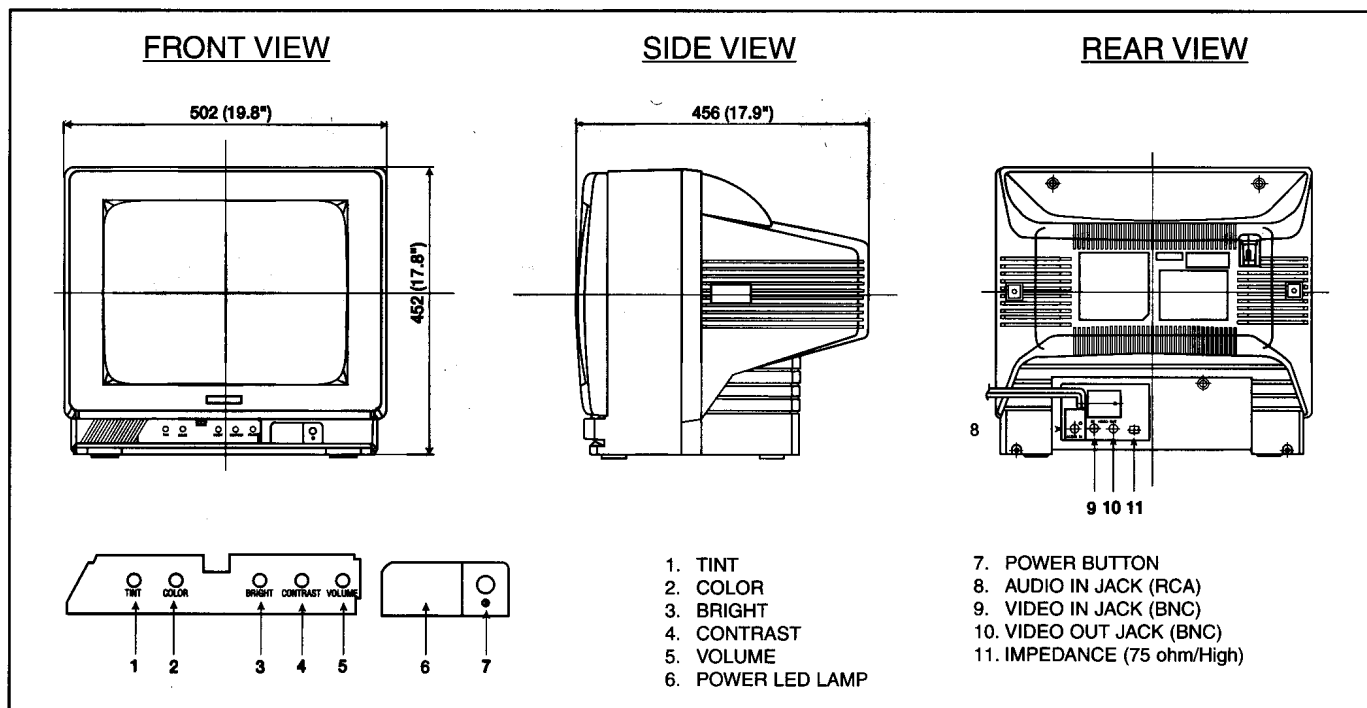
20-Inch Diagonal Color Video

Monitor With Audio

■ Specifications

Horizontal Resolution	More than 350 Lines at Center	Front Controls	Contrast (Rotary Knob) Volume (Rotary Knob) Power (Switch w/LED Indicator)
Input Signal	NTSC/PAL 1.0Vp-p, 75 Ohm	CRT Screen Size	20" Diagonal
Input Impedance	75 Ohms Terminated/or High (loop-through)	Visible Screen Size	19.2" Diagonal
Power Requirements	AC90V~260V +/- 10%, 60Hz/50Hz +/- 1%	Cabinet Finish & Materials	Black Plastic
Power Consumption	56W (AC 120V)	Dimensions	19.8W x 17.8H x 17.9D (Inches) (502W x 452H x 456D) (mm)
Input Connector	Video (BNC), Audio (RCA) AC Power Cord 2 Wire Plug	Weight	44.1 lbs.
Output Connector	Video (BNC)	Ambient Temperature	0°C - +40°C (32°F - 104°F)
Front Controls	Tint (Rotary Knob, only NTSC) Color (Rotary Knob) Brightness (Rotary Knob)		

■ Dimensions/Location of Controls



Design and specifications are subject to change without prior notice

Ikegami® IKEGAMI ELECTRONICS (U.S.A.), INC

HEADQUARTERS 37 BROOK AVENUE, MAYWOOD, NJ 07607
Phone: (201) 368-9171 Fax: (201) 569-1626

NORTHEAST OFFICE 29 BROOK AVENUE, MAYWOOD, NJ 07607 Phone: (201) 368-9171 Fax: (201) 569-1626

WEST COAST OFFICE 20603 EARL STREET, TORRANCE, CA 90503 Phone: (310) 370-2400 Fax: (310) 329-9582

SOUTHWEST OFFICE THREE DALLAS COMMUNICATIONS COMPLEX, 6309 NORTH O'CONNOR ROAD, SUITE 117
IRVING, TX 75039-3510 Phone: (972) 869-2363 Fax: (972) 556-1057

MIDWEST OFFICE 747 CHURCH ROAD, UNIT C4, ELMHURST, IL 60126 Phone: (630) 834-9774 Fax: (630) 834-8689