

With its compact and stylish design, the BTP12H37V12L is an effective monitoring and surveillance tool suitable for both indoor and outdoor use. It features a high resolution CCD with a wide range 3.7~12mm lens and 42 built-in IR Leds to ensure you get clear, detailed images 24/7 over short and long distances. Our true day/night bullet camera is the ideal solution for a large variety of applications such as car parks, warehouses and building entrances.

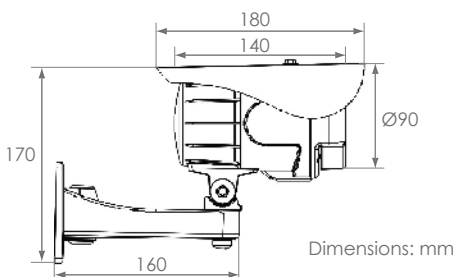


**BTP12H37V12L**



## Features

- 1/3" Sony High Resolution CCD
- Day/Night camera with removable IR cut filter
- Compact housing with tempered glass built to IP65
- 550 TVL resolution
- 3.7~12mm AI varifocal lens
- 0.00 Lux with IR Leds ON
- 42x IR leds with selectable distance up to 40m
- Split glass technology to avoid IR reflection
- Plug-and-Play installation
- External focus and zoom adjustment
- DIP switches to configure flickerless, AGC, and BLC
- 2-axis wall mount bracket with cable management and sunshield included
- Operates on 12VDC



## General Specifications

CCD type	1/3" Sony Super HAD Hi-Res
Effective picture element	PAL 752 (H) x 582 (V)
Scanning system	2:1 Interlace
Resolution	550 TV Lines
Sensitivity	0.00 Lux with IR Leds ON
Lens type	DC Drive varifocal lens with removable IR-cut filter 3.7~12 mm F1.6 Wide field of view: 83.9° x 61.9° Narrow field of view: 23.91° x 17.93°
Luminary	42x 850nm IR LEDs
IR distance	Up to 40m, IR range selectable Low: 10~15m / Middle: 15~25m / High: 25~40m
Synchronisation	Internal
S/N ratio	>48dB (AGC Off)
Gain control	High / Low selectable
Electronic shutter	PAL 1/50 ~ 1/110000s
Flickerless	On / Off selectable
Backlight compensation	On / Off selectable
White balance	Auto White Balance (2,000K~10,000K)
Gamma compensation	0.45
Video output	1.0 Vp-p 75 Ohms BNC connector
Power supply	DC 12V ± 10 %
Power consumption	840mA Max (IR On) 250mA Max (IR Off)
Operating temperature	-10° ~ +50° C
Humidity	85% or Less
Net weight	900g