

FireVu

DOM E



The FireVu IP Dome from D-Tec is a vandal resistant IP mini-dome with integrated intelligent video analysis to detect fire and smoke at source.

SMOKE & FLAME DETECTION

Encased within the camera housing, D-Tec's powerful Video Smoke Detection algorithm (VSD) identifies smoke and flame at source resolving many of the detection problems that have historically perplexed the fire security industry.

Fire detection challenges such as smoke stratification and varying air flow are removed as smoke and flame are identified at their source. As the FireVu IP Dome can detect smoke or flame anywhere within its field of view, including at any height or direction, it is faster than traditional forms of detection which rely on the smoke reaching the detector.

With its powerful and rapid VSD technology the FireVu IP Dome is ideal for areas with high ceilings or which contain industrial machinery and is trusted the world over to protect aircraft hangars, road tunnels, historical buildings and petrochemical sites.

INTEGRATED CAMERA RECORDING (ICR)

ICR combines recording capability and a full enterprise video server within the camera. Achieving fail safe, decentralized recording and video management, ICR reduces the 24/7 dependency on high bandwidth network infrastructure and minimises the associated maintenance costs.

VANDAL RESISTANT

Designed for installations where cameras could be susceptible to deliberate or accidental damage, or where they are exposed to harsh environmental conditions such as dust, the dome is built from impact resistant aluminium constructed to an IP66 rating.

MULTIPLE, SIMULTANEOUS VIDEO STREAMS

Our unique Visual Signal Processor (ViSP) allows the FireVu IP dome to transmit multiple simultaneous MPEG-4 and/ or JPEG images to any number of associated NetVu Connected devices for image viewing. Each stream can be tailored to suit the viewer's bandwidth requirements.



FEATURES

- Vandal Resistant IP mini-dome with fire detection technology
- Day/night sensitivity
- Identifies Smoke and Flame at source
- Visual confirmation of any alarm
- Unaffected by smoke / heat stratification or airflows/dilution
- Bespoke embedded smoke and flame detection algorithms
- Allows for smoke detection in hazardous / toxic environments
- Remote configuration and viewing
- Impact tested to BS EN 60068-2-75:1997
- Up to 16 configurable detection zones
- Configurable relay output for integration with alarm panels
- Up to 4CIF resolution, 540TVL, 25pps
- Integrated Camera Recording and full enterprise video server within camera
- Vandal resistant, die cast aluminium body and polycarbonate hemisphere
- Suitable for indoor or outdoor use
- Transmission of multiple, simultaneous video streams in MPEG-4 and JPEG format enables multiple users to view video streams at the settings they require
- Power over Ethernet (PoE) / 12Vdc as standard
- Local analogue test monitor output for installation activity
- Works seamlessly with NetVu ObserVer viewing client





SPECIFICATIONS

IMAGER

1/3" Super HADTM CCD

VIDEO PROCESSOR

DSP

EFFECTIVE PIXELS

752 (H) x 582 (V)

SENSITIVITY

0.7/0.1 lux for usable picture 40IRE with AGC on, lens at F1.6

HORIZONTAL RESOLUTION

540TVL

OUTPUT RESOLUTION & COMPRESSION

QCIF, CIF, 2CIF, 4CIF

JPEG and MPEG-4, Multiple Simultaneous streams of either to different viewers

STREAMING RATE

Maximum 25pps @ 4CIF

SIGNAL TO NOISE RATIO/DYNAMIC RANGE

Greater than 50dB/50dB

AUTO WHITE BALANCE

2500K ~ 9500K

AGC

On/Off, max <28dB

BACKLIGHT COMPENSATION

On/Off, centre weighted

GAMMA CORRECTION

0.45

ALARMS & RELAYS

2 alarm inputs via a 4 way connector

1 configurable relay output for integration into alarm panels

LENS

3.6-9mm, DC iris, F1.6

ORIENTATION

3 axis GyroView setup – camera can be wall or ceiling mounted

DATA CONNECTIONS

Ethernet: 10/100 BaseT RJ45 Connector

NETWORK SUPPORT

DCCP, DHCP, ICMP, TCP, UDP, IP, ARP, RTP, Telnet, FTP and SNMP

WEB PAGE CONFIGURATION

Camera setup, Manual update of viewing profiles, Network, Audio and Alarm Settings

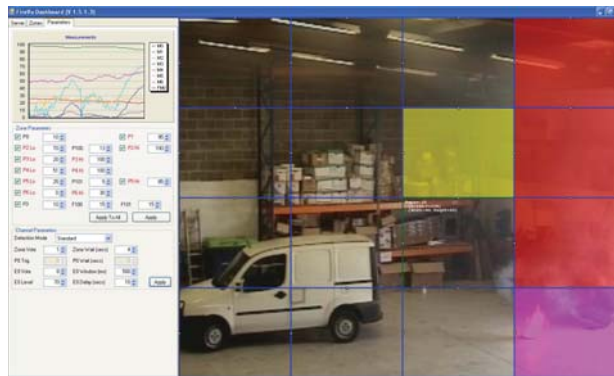
SUPPORT

Viewing Applications: NetVu ObserVer

Configuration Application: FireVu Dashboard

VIDEO SMOKE DETECTION (VSD)

D-Tec's VSD algorithm automatically identifies the particular motion pattern of smoke and alerts the system operator to its presence in the shortest time possible. This enables a fast response to a potential fire, saving valuable time even in voluminous areas or where a high airflow may be present. VSD is ideal for aircraft hangars, tunnels and power stations where large open areas or high vaulted ceilings can limit traditional fire detection systems from working effectively.



Key



Smoke detected



Pre alarm - Smoke



Flame detected

INTEGRATED CAMERA RECORDING (ICR)

Record camera footage at the unit as well as any associated DVR or Video Server. An integrated Micro SD provides local recording capability whilst ATA over Ethernet (AoE) protocol provides highly-secure point-to-point transfer of video files to a separate, remote, storage device for backup and long-term archiving.

POWER

Voltage: DC 12V -10% + 15%

Consumption: 12Vdc, 715mA

2-way terminal connector (DC), or via RJ45 (PoE)

POWER OVER ETHERNET

IEEE 802.3-2008. End span and bridging injectors supported

WEIGHTS, MEASURES & MATERIALS

Dimensions: HxD 104x148mm (4 1/8" x 5 7/8")

Weight: 1.18kg (41.6oz)

Bubble Material: Lexan Polycarbonate

Base Material: Die cast aluminium LM25

ENVIRONMENTAL

IP Rating: IP66

Operating Temperature: -10 to +50°C (14 to 122°F)

Operating Humidity: 20% - 80% relative humidity, non condensing

WARRANTY

2 Years

