

Features

- Interactive Video Alarm Management System for audio-visual remote surveillance applications
- Designed for Windows NT and Windows 95/98
- Full control of connected cameras (e.g. pan/tilt/zoom) and internal functions
- Simultaneous display and handling of up to four video streams and network connections
- Fullscreen mode for display of one single video stream
- Complies with ITU-standards H.320/H.323
- Superior video image quality up to 704 x 576 pixels (max.)
- Video, audio and data communication via ISDN, GSM, LAN (TCP/IP), Modem
- Automatic recording of audio and video to the hard disk
- Full control of connected video sending units including attached peripheral components
- Alarm management
- Connection status signalling
- User-friendly application
- Available as single, triple or ten user licence

Controlware GmbH
International Headquarters
Waldstrasse 92
63128 Dietzenbach
Tel. +49 60 74 8 58-00
Fax +49 60 74 8 58-1 91
e-mail: cwp-info@controlware.de
www.controlware.de

Australia
Controlware Australia Pty.Ltd.
Tel. +61 2 8853 9200
Fax +61 2 8853 9299
e-mail: sales@cware.com.au
www.controlware.com.au

Austria
Controlware Kommunikationssysteme GmbH
Tel. +43 22 35 8 65 46-0
Fax +43 22 35 8 65 46-54
e-mail: info@controlware.at
www.controlware.at

Belgium
Controlware Northern Europe S.A./N.V.
Tel. +32 2 712 0200
Fax +32 2 712 0201
e-mail: sales@controlware.be

Canada
Controlware Inc.
Canadian Branch
Tel. +1 705 726 297
Fax +1 705 726 5787
e-mail: Jheller@cware.com

France
Controlware France S.A.
Tel. +33 1 46 12 77 00
Fax +33 1 46 12 77 11
e-mail: commercial@controlware.fr

Netherlands
Controlware Northern Europe S.A./N.V.
Dutch Branch Office
Tel. +31 30 28 75 110
Fax +31 30 28 75 111
e-mail: rudi.de.visser@controlware.nl

Singapore
Controlware Asia-Pacific Pte.Ltd.
Tel. +65 325 1700
Fax +65 325 1711
e-mail: info@controlware.com.sg
www.controlware.com.sg

South Africa
Controlware Communication Systems (Pty) Ltd.
Tel. +27 (11) 315 7870
Fax +27 (11) 305 5294
e-mail: dan.schilling@controlware.co.za

Spain
Controlware Communication Systems, S.A.
Tel. +34 91 678 1204
Fax +34 91 678 1119
e-mail: marketing@controlware.es

Sweden
Controlware Northern Europe S.A./N.V.
Nordic Branch
Tel. +46 8 555 36 388
Fax +46 8 555 36 386
e-mail: controlware@telia.com

Switzerland
(German speaking area)
Controlware AG
Tel. +41 55 415 64 74
Fax +41 55 415 64 84
e-mail: info@controlware.ch
www.controlware.ch

(French speaking area)
Controlware SA
Tel. +41 21 802 22 14
Fax +41 21 802 22 15
e-mail: alain.bromm@controlware.ch
www.controlware.ch

United Kingdom
Controlware Ltd.
Tel. +44 1488 649 200
Fax +44 1488 649 299
e-mail: sales@cware.co.uk
www.controlware.co.uk

United States
Controlware Inc.
Tel. +1 732 919 0400
Fax +1 732 919 7673
e-mail: info@cware.com
www.cware.com

controlware
communicationssystem

Neiplan Medienservice GmbH - Dietzenbach

Solutions

Video Surveillance and Multimedia Solutions



Multimedia Software

controlware
VSS
3800/4

controlware
communicationssystem

Your contact:

CWP/MK/SGE Rev. 1.1/12.00

All products and names contained herein are trademarks and/or protected by the property rights of the respective owner.



Applications

Controlware-VSS 3800/4 Multimedia Software is a multimedia decoding software which serves as the receiver for live video images, audio and data from several remote sites at the same time. This information is transmitted via ISDN, Ethernet or other several common wide area networks and is displayed in real time on a supervisor PC containing the software. VSS 3800/4 allows for simultaneous handling of up to four video connections, which can also be recorded to the local hard disk for future retrieval and screening. Users can remotely monitor multiple events and perform alarm management from any desired location. The Video Software Solution (VSS), based on Windows 95, 98 or Windows NT, is ideally suited for numerous applications from individual video surveillance to complex control room solutions, where several remote objects or locations have to be monitored simultaneously. VSS 3800/4 complies with the H.320/H.323 standard.

Public/ Urban Security

- emergency call centres, access control systems, surveillance of road traffic, railroads

Private Security

- security service providers, surveillance systems of building sites, estates, entrances

Commercial

- surveillance of banks, department stores, warehouses

Medical

- telediagnosis, medical supervision, nursing

Tourism

- checking weather conditions, event information services

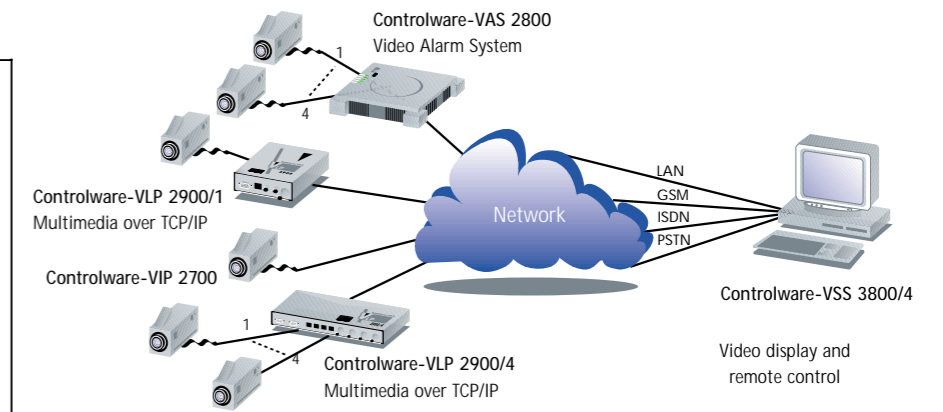
Function

When the specified level of motion at any of the monitored sites is exceeded or an external alarm input is received, the remote Controlware VIP (Video ISDN Products), VAS (Video Alarm System) or VLP (Video LAN Products) trigger an alarm and transmit live, full colour video audio signals via ISDN, LAN, GSM or analogue telephone lines to the VSS 3800/4 supervisor PC, which is equipped with a graphic or audio card. All information can be processed, printed and archived on the PC's hard disk from where it can be retrieved later if necessary.

This is particularly important for all security related applications where event documentation and off-line analysis are essential. Image quality delivered by VSS 3800/4 satisfies even the most demanding requirements imposed by security and remote surveillance environments.

Interoperability with Controlware Senders

The full potential of VSS 3800/4 is unleashed in combination with Controlware VIP, VAS or VLP sending devices (see separate datasheets). VSS 3800/4 provides full remote control of these devices and connected cameras (e.g. Pan/tilt/zoom).



Network Access

VSS 3800/4 communicates across several common wide area networks (WANs) besides ISDN, such as analogue telephone lines (via modem), wireless GSM networks, and LAN (TCP/IP). When connected via Ethernet (TCP/IP), additional local video sending units as well as further workstations can be connected. This offers maximum flexibility for network access wherever ISDN is not available or serves as backup path.

System Requirements

- Pentium II with 400 MHz or higher
- Windows NT (4.0 or higher) or Windows 95/98
- 128 MB RAM
- Graphic Card with PCI-Bus
- ISDN (Quadro) Card with CAPI2.0
- Ethernet Card
- Sound Card (optional)