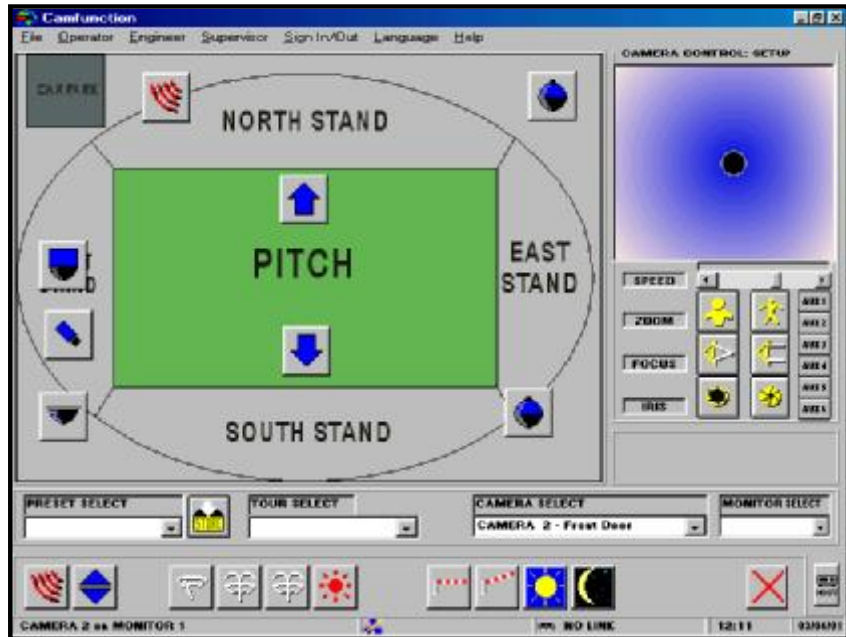


CAMFUNCTION DATA SHEET

CAMFUNCTION is a software package that allows control of multifunction dome cameras, telemetry receivers, video matrix/switchers and video recording devices using a PC. The cameras can be controlled by mouse/touchscreen via the on-screen 'joystick', PC keyboard or by a physical joystick which is connected to the back of the PC.

CAMFUNCTION includes a map layout facility which displays a map of the premises including the location of all cameras. Simply select a camera either by using the camera select list or click one of the camera icons displayed on the map. This makes it easy for the operator to know exactly where the cameras are positioned, even if they are new to the CCTV system. 'Hot spot' icons on the map can also trigger multiple cameras in the area to turn and view specific points on the map (Ideal for following suspects in retail environments).



CAMFUNCTION also offers VCR/Digital recorder controls, allowing integration of the whole CCTV system through a single on-screen interface. This reduces the desk top space required and allows the VCR to be positioned in a secure area.

Many of the selection buttons can be titled giving the operator a clear indication of their function. This vastly reduces operator training times, as well as mistakes made by "finger trouble" on the part of operators; a common problem in security system management. You can even have up to sixteen user configurable buttons on the main operators screen to trigger function keys adding a personalisation which previously could only be achieved through expensive bespoke programming. To ensure security of the system each operator has their own password and functions available to them.

Function keys can be created to do a number of operations with a single keypress. Features such as camera and preset selection, snapshot, VCR commands and tour selection can now be triggered by a keyboard or on-screen button. These function keys can also be triggered by timers at programmable times.

Images can be displayed on CCTV monitors or the PC screen when the CCTV Grab video capture card is used. When using the CCTV Grab card CAMFUNCTION has a snapshot feature which enables you to store a particular picture on to the hard disk. The software can be set to grab snapshots at selected intervals. CAMFUNCTION has a built in playback viewer which enables pictures to be printed or faxed direct from the PC or saved to floppy disk and emailed.

Camfunction has the ability to email a picture to up to 20 email addresses. The email feature can be programmed on to the software's function keys. These can be triggered by an alarm input, keyboard, timers map icons or on-screen buttons. The email can have a JPEG imaged attached (of an alarm trigger point for example) or just a text message (ideal for mobile phone users). The web upload command can again be put into a function key and is intended for use by anyone who wants to show pictures from CCTV cameras on the internet or intranet. If users have a permanent connection to the internet is available (cable modem or DSL) then pictures will be uploaded at a specified rate or the software can be set to make a dial up connection via phone line, upload the picture and then disconnect to save on call costs.

Control over a computer network gives multiple users control of the CCTV system. Control is achieved by connecting the control equipment either to a PC running Camfunction OR to a dedicated Video Server (call for list of compatible Video Servers). Additional PCs requiring network control must be running Camfunction.

System configurations

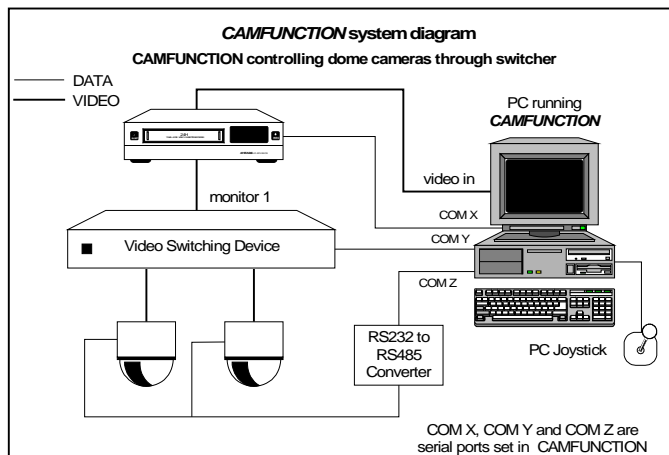
CAMFUNCTION is designed to operate in many different configurations with varying numbers of cameras.

- *Single camera (dome or receiver) and VCR:* No separate CCTV equipment is needed. This makes CAMFUNCTION an ideal, low cost system for small systems.
- *Multiple cameras (domes or receivers) and VCR's :* The only additional equipment required is a video switching device. CAMFUNCTION is compatible with an ever increasing range of video switchers from CCTV manufacturers. If video multiplexers are to be used in the system CAMFUNCTION can link to our multiplexer control software to switch the pictures through the multiplexer. By adding switching devices very large matrix or multiplexer matrix systems can be built at a low cost.

OPTIONS AVAILABLE:

- CAMFUNCTION is compatible with our 'plus' and 'studio' ranges of control software allowing full integration of various dome cameras and telemetry receivers with other multiplexers or transmission kit.

Hardware / Software	Requirements																										
PC & Display	Pentium 333Mhz or higher with VGA 16bit colours and 1 spare PCI slot.																										
PC Ram	32 MB or above																										
PC Hard drive	Min. 20MB of hard disk space. 80 MB or above if using snapshots.																										
PC CD Rom drive	4x speed or faster																										
PC Control device	Mouse/touchscreen and / or PC analogue joystick (4 button).																										
PC Parallel port	1 parallel port																										
PC RS232 Communications ports	1 mouse / touch-screen port, 1 serial port for cameras, 1 serial port for VCR's, 1 serial port for video switching device																										
PC Operating System & Network	Windows 95, 98, 2000, ME, NT, XP with TCP/IP protocol for network operation																										
Compatible cameras and telemetry receivers (RS485/422 versions) New cameras being added all the time	<table border="0"> <tr> <td>Panasonic CSR/CPR/CLR/BLR ranges</td> <td>BBV RX450/550 Rvr's</td> </tr> <tr> <td>CBC (Computar) SMD range</td> <td>BBV Telemetry Rvr's (through TX1000/TX1500)</td> </tr> <tr> <td>Sanyo VCC range</td> <td>Sony SSC range</td> </tr> <tr> <td>Star Micronics MD range</td> <td>All Philips/ Burle domes</td> </tr> <tr> <td>Pelco Spectra Dome</td> <td>Dennard dome</td> </tr> <tr> <td>VCL Microsphere range</td> <td>Synectics Telemetry Rvr's (through matrix)</td> </tr> <tr> <td>JVC TK-C675/TK-C553/TK-C676/TK-C1480/TK-1460</td> <td>Meyertech Telemetry Rvr's & domes</td> </tr> <tr> <td>Vicon Dome / Rvr's (Variable speed)</td> <td>CBC (Computar) CS Rvr's range</td> </tr> <tr> <td>Vicon Dome / Rvr's (Fixed Speed).</td> <td>Panasonic CS range</td> </tr> <tr> <td>Gyyr Vortex Dome</td> <td>Mark Mercer Electronics Domes</td> </tr> <tr> <td>CSLILIN-PIH-Receiver (through PIH-MATRIX)</td> <td>Sensormatic Speed Dome Ultra Range</td> </tr> <tr> <td>Molynx Telemetry Rvr's</td> <td>American Dynamics Delta Dome Range</td> </tr> <tr> <td>Dennard Telemetry RX (Through DTX1000)</td> <td></td> </tr> </table> <p><i>Further models being added, please contact us for latest information.</i></p>	Panasonic CSR/CPR/CLR/BLR ranges	BBV RX450/550 Rvr's	CBC (Computar) SMD range	BBV Telemetry Rvr's (through TX1000/TX1500)	Sanyo VCC range	Sony SSC range	Star Micronics MD range	All Philips/ Burle domes	Pelco Spectra Dome	Dennard dome	VCL Microsphere range	Synectics Telemetry Rvr's (through matrix)	JVC TK-C675/TK-C553/TK-C676/TK-C1480/TK-1460	Meyertech Telemetry Rvr's & domes	Vicon Dome / Rvr's (Variable speed)	CBC (Computar) CS Rvr's range	Vicon Dome / Rvr's (Fixed Speed).	Panasonic CS range	Gyyr Vortex Dome	Mark Mercer Electronics Domes	CSLILIN-PIH-Receiver (through PIH-MATRIX)	Sensormatic Speed Dome Ultra Range	Molynx Telemetry Rvr's	American Dynamics Delta Dome Range	Dennard Telemetry RX (Through DTX1000)	
Panasonic CSR/CPR/CLR/BLR ranges	BBV RX450/550 Rvr's																										
CBC (Computar) SMD range	BBV Telemetry Rvr's (through TX1000/TX1500)																										
Sanyo VCC range	Sony SSC range																										
Star Micronics MD range	All Philips/ Burle domes																										
Pelco Spectra Dome	Dennard dome																										
VCL Microsphere range	Synectics Telemetry Rvr's (through matrix)																										
JVC TK-C675/TK-C553/TK-C676/TK-C1480/TK-1460	Meyertech Telemetry Rvr's & domes																										
Vicon Dome / Rvr's (Variable speed)	CBC (Computar) CS Rvr's range																										
Vicon Dome / Rvr's (Fixed Speed).	Panasonic CS range																										
Gyyr Vortex Dome	Mark Mercer Electronics Domes																										
CSLILIN-PIH-Receiver (through PIH-MATRIX)	Sensormatic Speed Dome Ultra Range																										
Molynx Telemetry Rvr's	American Dynamics Delta Dome Range																										
Dennard Telemetry RX (Through DTX1000)																											
Compatible video switching devices	<table border="0"> <tr> <td>BBV TX1000 / TX1500</td> <td>CBC(Computar) CS16.4 Video Matrix</td> </tr> <tr> <td>CSLIN-PIH-Matrix</td> <td>Extron Matrix 50 (Audio & Video)</td> </tr> <tr> <td>Mark Mercer Matrix</td> <td>Meyertech Video Matrix</td> </tr> <tr> <td>Panasonic WJ-HD500</td> <td>Pelco CM6700 Switcher</td> </tr> <tr> <td>Synectics Video Matrix</td> <td>VCL Maxcom & Mini Matrix</td> </tr> <tr> <td>Video Switch VSX416</td> <td>Dennard DTX1000 Switcher</td> </tr> <tr> <td>Molynx 600 series & Visilynx II Telemetry Controllers</td> <td>Molynx Visilynx II+ (via PCCON2)</td> </tr> </table> <p><i>Any multiplexer or equipment controllable using our other control software (e.g. 'plus' or 'studio' range).</i> <i>PC Multiplexer software with multi-input capture board from CCTV Software</i></p>	BBV TX1000 / TX1500	CBC(Computar) CS16.4 Video Matrix	CSLIN-PIH-Matrix	Extron Matrix 50 (Audio & Video)	Mark Mercer Matrix	Meyertech Video Matrix	Panasonic WJ-HD500	Pelco CM6700 Switcher	Synectics Video Matrix	VCL Maxcom & Mini Matrix	Video Switch VSX416	Dennard DTX1000 Switcher	Molynx 600 series & Visilynx II Telemetry Controllers	Molynx Visilynx II+ (via PCCON2)												
BBV TX1000 / TX1500	CBC(Computar) CS16.4 Video Matrix																										
CSLIN-PIH-Matrix	Extron Matrix 50 (Audio & Video)																										
Mark Mercer Matrix	Meyertech Video Matrix																										
Panasonic WJ-HD500	Pelco CM6700 Switcher																										
Synectics Video Matrix	VCL Maxcom & Mini Matrix																										
Video Switch VSX416	Dennard DTX1000 Switcher																										
Molynx 600 series & Visilynx II Telemetry Controllers	Molynx Visilynx II+ (via PCCON2)																										
Compatible Video Servers & Network Cameras	<table border="0"> <tr> <td>Axis 2400/2401 Servers</td> <td>JVC VN-C1U/VN-C2U/VN-C3U/VN-C30U Network Cameras</td> </tr> <tr> <td>Sony SNT-V304 Video Server</td> <td>Axis 2420/2100/2110/2120 Network Cameras</td> </tr> <tr> <td>GYR Tango II Video Server</td> <td>Sony SNC-VL10 Network Camera</td> </tr> </table>	Axis 2400/2401 Servers	JVC VN-C1U/VN-C2U/VN-C3U/VN-C30U Network Cameras	Sony SNT-V304 Video Server	Axis 2420/2100/2110/2120 Network Cameras	GYR Tango II Video Server	Sony SNC-VL10 Network Camera																				
Axis 2400/2401 Servers	JVC VN-C1U/VN-C2U/VN-C3U/VN-C30U Network Cameras																										
Sony SNT-V304 Video Server	Axis 2420/2100/2110/2120 Network Cameras																										
GYR Tango II Video Server	Sony SNC-VL10 Network Camera																										
Compatible RS232/RS485 VCR's/digital recorders	Most Manufacturers <i>Further models being added all the time, please contact us for latest information.</i>																										
Compatible video capture card	CCTVGRAB card, for use with Windows 95/98,2000,ME & NT. PCI slot. VGA card must have direct draw capability.																										



U.K. OFFICE	CCTV SOFTWARE LTD 37 CHAMBRES RD SOUTHPORT MERSEYSIDE PR8 6JG U.K. TEL +44 (0)1704 548675 FAX +44 (0)1704 548679	U.S. OFFICE	CCTV SOFTWARE INC 10560 MAIN STREET SUITE 415 FAIRFAX VA 22030 U.S.A. sales@cctvsoftware.net
E-MAIL sales@cctvsoftware.co.uk		INTERNET PAGE www.cctvsoftware.com	
		Ref:CAMFUNC052002	