

# Network Video Recording Software

## VK-64 and VK-16

you can



## VK-64 and VK-16 Network Video Recording Software – Don't Miss A Thing

VK-64 is a fully scalable Network Video Recorder, supporting up to 64 cameras. It offers high quality video recording, with powerful search functions for rapid retrieval of previously recorded footage.

UP TO  
64 CAMERAS

MULTI-SITE  
MONITORING

RECORDING AT  
UP TO 30FPS

ADVANCED SEARCH  
AND RETRIEVAL

NAS SUPPORT

AUDIO RECORDING  
CAPABILITY

### Key features

- Software-based Network Video Recorder, offers comprehensive video monitoring and recording over an IP network
- Supports up to 64 network cameras (VK-64) or 16 network cameras (VK-16)
- Allows monitoring of multiple sites from a central location, via a highly intuitive interface
- Recording and playback of high-quality audio and video at up to 30 fps
- Advanced search and retrieval tools
- Support for NAS (Network Attached Storage)
- Audio recording capability
- Displays up to 35 live or recorded video feeds simultaneously
- Enables remote off-site recording for enhanced data protection
- Easy to use and fully scalable via Microsoft Windows™
- Recording triggered by scheduled event, sensor and/or motion detection

### What's in the box:

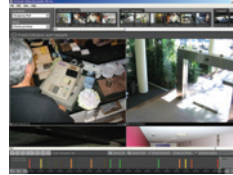
VK-64 / VK-16 Network Video  
Recording Software



**Canon**

# VK-64 and VK-16

## Specifications



<b>SUPPORTED EQUIPMENT</b> Compatible Network Cameras  Compatible Camera Servers No of Storage Servers per client No of Viewer sessions to Server	VB-C60 / VB-C50i(R) / VB-C300 / VB-C50FSi / VB-C50Fi / VB-C500VD / VB-C500D / VB-C10(R) Canon VB150 Maximum 10 Servers Maximum 5 simultaneous viewers
<b>RECORDING SPECIFICATION</b> Number of Inputs  Resolution of Recorded Image  Recording Medium Maximum Supported Capacity Frame Rate of Recorded Image Selectable Recording Modes	Maximum 64 video inputs (VK-64) Maximum 16 video inputs (VK-16) 768 x 576 / 640 x 480 / 384 x 288 / 320 x 240 / 192 x 144 / 160 x 120 (dependent on camera model) Hard Disk Drive 9999 GB, subject to attached storage hardware 0.1 fps - 30 fps Scheduled, Sensor Event, Motion Detection Pre-Event Recording (max 30 seconds) Post-Event Recording (max 999 seconds)
<b>DISPLAY - COMMON</b> Number of Video Windows Layout Sequencer Full Screen Video Task Area	Maximum 64 windows (SXGA or better display required) Supported Supported Can be shown or removed, as required
<b>DISPLAY - VIDEO PLAYBACK</b> Playback while Recording Monitoring while Recording	Yes: simultaneous playback and recording Yes: watch live footage during recording

Rewind / Fast Forward Search Search Options	1x / 2x / 5x / 10x search speeds Date and Time Event Priority and Type Location or Zone
<b>DISPLAY - CONTROL</b> PTZ Camera Control Preset Tour Event Notification External Device Output Control	Supported on compatible Canon Network cameras Yes Yes Yes
<b>IMAGE ENHANCEMENT</b> Digital Night Mode Backlight Compensation Multi-streaming Shade Correction	Supported on compatible Canon Network cameras 3 levels Yes Video Playback - Yes Monitoring Live Video - Yes
<b>EXTRACTION FACILITIES</b> Video Export Formats	QuickTime™ moving image file format (.MOV)
All data is based on Canon's standard testing methods. This Leaflet and the specifications of the product have been developed prior to the date of product launch. Specifications are subject to change without notice. ™and ®: All company and/or product names are trademarks and/or registered trademarks of their respective manufacturers in their markets and/or countries.	

## Compatible cameras



**VB-C60**  
PTZ Network Camera



**VB-C50i/R**  
PTZ Network Camera



**VB-C300**  
Wide-Angle PTZ Network Camera



**VB-C50FSi**  
Fixed Network Camera



**VB-C500VD**  
Network Camera



**VB-C500D**  
Fixed Dome Network Camera



Canon Inc.  
www.canon.com

Canon Europa N.V.  
www.canon-europe.com

English Edition  
© Canon Europa N.V., 2009 (0909)

Canon Europe Ltd  
3 The Square  
Stockley Park  
Uxbridge  
Middlesex  
UB11 1ET  
United Kingdom