

NetServer-6

6 Channel Video Network Server

- **6 Channel Video Server for PAL and NTSC**
- **Real Time Viewing in Single- or Multi-view**
- **Wavelet Compression**
- **TCP/IP Protocols for Communication on Intranets and the Internet**
- **10BaseT Ethernet Port**
- **External Modem**
- **Internal HTML Pages for Viewing and Administration**
- **Video Motion Detection and Alarm Contacts**
- **6 Alarm Inputs, 6 Relay Outputs**



The NetServer-6 is a self-contained network video server for 6 video inputs. The unit comprises a 6-channel video multiplexer, high-resolution video encoder, wavelet video compression, video motion detection and a network server for up to 100 simultaneous video streams. The built in web pages allow the display of the images individually or in a 6-channel matrix. Web pages are available for connection through a Firewall (server push viewer) and for non-Windows computers.

The network interface is compliant with 10BaseT Ethernet and supports the TCP/IP set of communication protocols allowing communication on private networks, Intranets and the Internet. With an optional external modem, NetServer-6 can communicate over public telephone lines.

Both the software video motion detector and the contact closure inputs can trigger alarms. Once an alarm is generated the camera will send alarm pictures to a predefined e-mail address or upload the pictures to a file on a network server, using FTP. Alarms can also trigger one of the six relay outputs on the back of the unit.

The NetServer has serial outputs that can be used to control of Auto, Pan and Tilt units, Zoom lenses or for connection of an external PSTN modem.

Security options include password access protection, IP address filtering and image encryption.

A PC with standard Internet Explorer or Netscape browser is used for viewing of the network video images.

Display options include individual images or a 6-channel matrix screen. The image update rate, resolution and size are all adjustable from the remote viewing location.

To enhance the image update rate, a quality box can be defined for the area of interest. This part of the image is transmitted at the selected quality, while the remainder is transmitted at reduced quality.

SPECIFICATIONS

ELECTRICAL

Model No.	Nominal voltage/power	Color system
LTC 0206/91	12VDC or 24VAC; 10W	NTSC/PAL
NetSvr-6	12VDC or 24VAC; 10W	NTSC/PAL

Video specification:

Video inputs:

- 6 inputs on BNC
- 1 Vpp, selectable 75 Ohms or high impedance

Network:

Processor: 32 bit RISC Processor

Flash memory: 8 MB

RAM: 16 MB

Operating System: Embedded Linux

Network protocols: TPC/IP, HTTP, ARP, RARP, ICMP, DHCP, FTP, SMTP, PPP, PPPoE.

Network Port: 10Base-T Ethernet

Operating system:

Windows 98/ME/NT/2000/XP

Recommended Browsers:

- MS Internet Explorer Ver 5.0 or later
- Netscape Ver 4.7 or later
- for non-Windows computers a Java applet viewer is present running on the Java Virtual Machine.

Image Resolution:

720X486 (interlaced), 720X243, 360X243, 180X121, 90X60

Image Compression:

- Compression: Wavelet, Progressive mode
- Compression Ratio: 20:1 ~300:1
- Frame Rate: Max 30fps (NTSC) or 25fps (PAL), and 5fps (NTSC) or 4fps (PAL) for multi-channel display.

Performance:

- Transfer Rate (server): Max 120fps,
- Decoding Rate (client): 2~30fps,
- Max number of clients/streams: 100
- Max number of server push clients: 5

Management and Software Update:

- Remote system-configuration
- Flash memory allows new version software updates through the local LAN network

Security:

- Passwords and IDs for administrator and 5 users
- IP Address Filtering
- Image encryption

Alarms and I/O:

- Motion detection (Activity detection)
- 6 solid state relay outputs (normally open contact), max 250 VAC or VDC, 170mA
- 6 opto-coupler alarm inputs, 5 to 12 VDC, 10 to 20mA

Automatic alarm image transfer by e-mail and FTP.

Miscellaneous functions:

- High quality image area setting
- Image quality control (10 levels of compression)
- Periodical image transfers through e-mail or uploads to a server using FTP
- Grey/Progressive/Single-shot Mode

Serial ports:

- RS-232 for Pan/Tilt/Zoom Control or PSTN modem.
- RS-485 for Pan/Tilt/Zoom Control.

External power supply:

- Input voltage rating: 100 – 240 VAC
- Output: 12 VDC/1.5A
- Power supply unit included

MECHANICAL

Connectors:

- 6x BNC, video inputs.
- RJ-45 Ethernet.
- 9-pole terminal block for RS232 and RS485
- 12-pole terminal block for 6 Sensor inputs
- 12-pole terminal block for 6 Relay outputs
- 3-pin terminal block for 12VDC and 24VAC inputs

Dimensions: 41 x 215 x 251 mm (HxWxD*)

- *including connectors
- Feet (detachable) add 5 mm to the height

Weight: 1.5 kg

ENVIRONMENTAL

Temperature range:

- Operating: -10 to 50°C (14 to 122°F)
- Storage: -40 to 70°C (-40 to 158°F)

Operating Humidity: 5% to 93% non-condensing

Shock: 30 G

Vibration: 1.2 G

Electro Magnetic Compatibility:

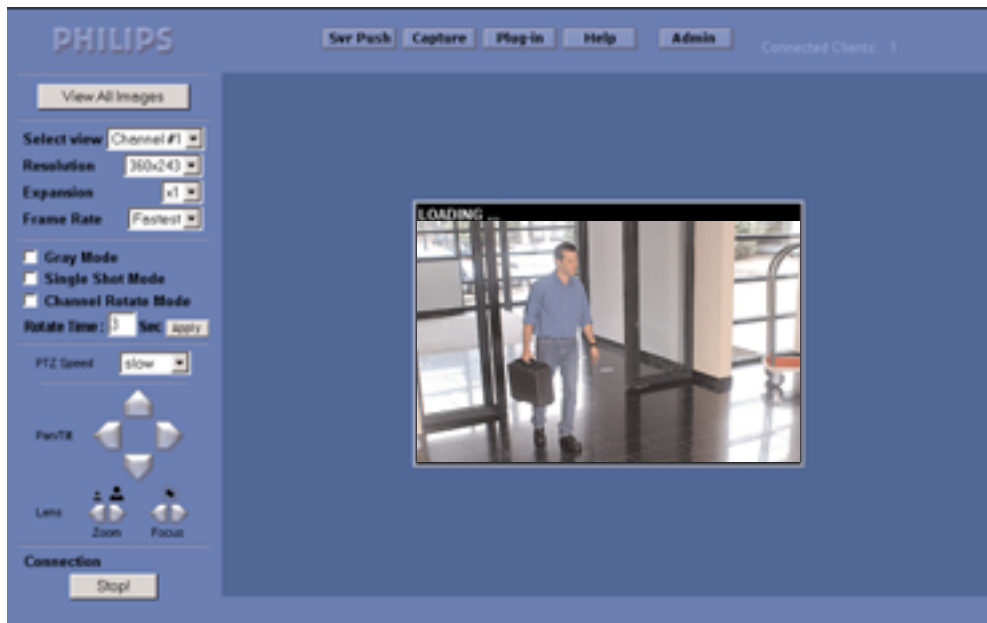
- Emission: EN 50081-1 Class B
- FCC Ch 15 Class B

Immunity: EN 50082

Certification: CE, FCC, UL, cUL and C-tick

Delivered accessories:

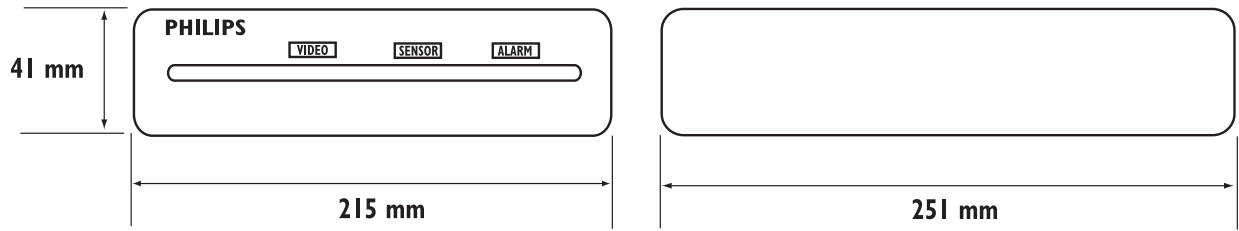
- Set-up software
- Cross-wire network cable
- Power supply unit



Single-view Page



Multi-view Page



Dimensions



Connectors



PHILIPS

Let's make things better.