



BOSCH
Invented for life

DiBos Micro Digital Video Recorders - Version 8



- ▶ Models for 6 and 12 analog cameras and up to 8 additional network cameras/video encoders
- ▶ MPEG4 compression
- ▶ Control cameras and AutoDomes with Biphase or Bilinx
- ▶ 2 spot monitor outputs
- ▶ Web-browser remote access and viewing
- ▶ CD-RW/DVD-RW for exporting video clips
- ▶ Connectable to Bosch alarm panels
- ▶ Easy to use and powerful user interface

DiBos Micro uses Bosch's proven state of the art digital recording and communications technology and takes video surveillance to a new level. It is an integral part of overall security solutions for a wide range of applications – including banks, large retailers, railway stations, airports, city centers, industrial facilities, and office buildings.

Customers can retrieve vital images and share information faster than ever before. They can better assess critical situations and take action immediately. Whether they're on site or at a remote network location, authorized personnel have quick, convenient access to information so they can operate more effectively and efficiently.

DiBos Micro can store up to 180/150 ips (NTSC/PAL) on 12 composite video inputs. As many as 4 audio data streams can be recorded on a 12-video channel unit. Users can connect up to 8 additional network cameras or network video encoders and store up to 30/25 ips per attached network unit. Every network video encoder can add one additional audio channel. In addition to Bosch MPEG4 network units, DiBos Micro can receive JPEG images from network cameras from numerous manufacturers.

The system offers advanced features for viewing and very high flexibility in recording and image access. The real power of DiBos Micro is fast, convenient accessibility to images and information. If required,

accessibility to images and information is possible round the clock and everywhere all over the world.

Communication and access to DiBos Micro is possible via private or public networks. For these purposes the system can be connected to a variety of peripheral devices and systems.

The unique, scalable GUI allows live and recorded images from multiple remote systems to be viewed from a single PC or another DiBos Micro. With this powerful tool, security managers can monitor and supervise various locations simultaneously.

Cameras and viewing modes can be programmed or selected manually. Each camera offers in-window pan/tilt/zoom functionality from local or remote facilities. Images are displayed with date/time, location, camera name and status of connected devices such as detectors and sensors.

DiBos Micro can be programmed to respond to specific situations and events automatically. Minimal human intervention is necessary.

In response to alarms, the system can be programmed to transmit images or messages to security personnel or security control center.

Playback is easy thanks to familiar search and navigation functions in a tree structure. Images can be accessed locally or remotely via a company network or the Internet. The customer can select multiple different views from up to 30 cameras.

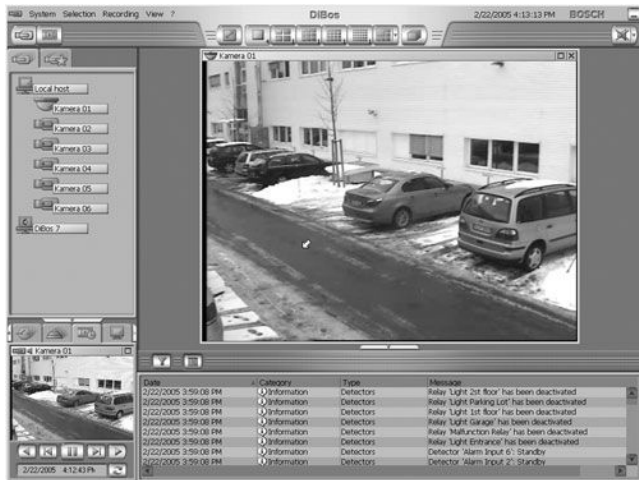
Fast, powerful image search functions eliminate time-consuming manual searches. Functions include search for image changes, search for criteria such as camera number, recording date/time, and optional ATM transaction data, e. g. credit card number, bank code, account number, and/or amount withdrawn.

To ensure high security, all access is controlled by user authorization. Profiles are assigned by the system administrator. Events, such as login, logoff, status changes, image transmission, and system shutdown are stored in a database. Video authentication is built in to ensure that DiBos images are not altered in any way. Various storage devices – such as external disk arrays, RAID and NAS devices, and external disk drives – may be used for export and backup of images.

DiBos Micro supports Bilinx for pan/tilt/zoom and camera configuration via the video coax cable. The configuration wizard makes installation quick and easy.

DiBos Micro serial ports can be connected to Bosch alarm panels, ATM, Allegiant matrices and foyer card readers.

Live mode

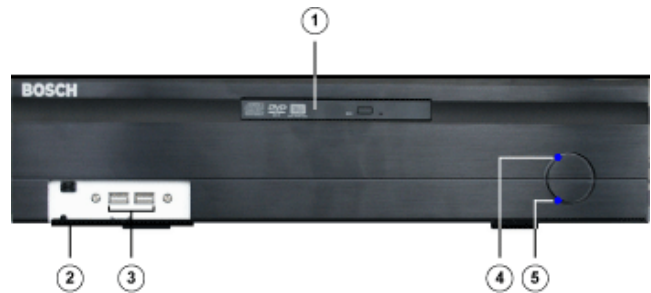


Playback mode



Installation/Configuration Notes

Front view:



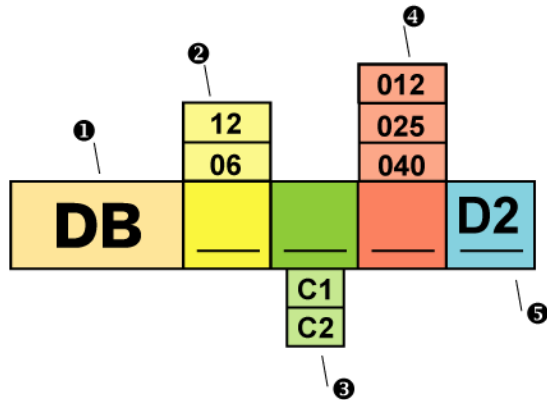
- 1 CD-RW/DVD-RW
- 2 Front covering (opened with one push on the cover)
- 3 2x USB 2.0
- 4 Control lamp: System is switched on
- 5 Control lamp: Hard disk access

Rear view:



- | | |
|--|---|
| 1 On/Off switch | 7 VGA-Monitor |
| 2 Mains connection 100/240VAC, 50 / 60 Hz (automatic switchover) | 8 Ethernet (RJ45) 2x USB 2.0 |
| 3 Mouse (green) Keyboard (purple) | 9 Line In (blue) Speaker Out (green) Microphone In (red), Mono |
| 4 2x USB 2.0 | 10 Grabber 1 (camera 1 - 6) |
| 5 Serial port COM1 | 11 Grabber 2 (camera 7 - 12) |
| 6 Parallel interface (Dongle must be plugged in) | 12 I/O card with plug for connecting the alarm inputs, relay outputs and Biphase and plug for video monitor A and video monitor B |

Ordering information:



- 1 Type DiBos Micro
- 2 Number of analog camera inputs
- 3 C1 version with max. 6 camera inputs and 120, 250, 400 GB
C2 version with max. 12 camera inputs and 250, 400 GB
- 4 Disk size (x10 GB)
- 5 Version

E. g. : **DB 12 C2 040 D2**
12 channel DiBos Micro with 400 GB storage

Technical Specifications

Electrical

Camera Inputs	Connection cable with 6 (DB 06) or 12 (DB 12) BNC connectors			
Composite video signal	1 Vpp, 75 Ohm			
Recording resolution	PAL: 352 x 288 (CIF), 704 x 288 (2CIF) NTSC: 352 x 240 (CIF), 704 x 240 (2CIF)			
Network cameras / network video encoder	8 video/audio MPEG4 data streams from Bosch/VCS network or JPEG devices			
Compression Method	MPEG4			
DiBos Micro device	IPS CIF (PAL)	IPS CIF (NTSC)	IPS 2CIF (PAL)	IPS 2CIF (NTSC)
DB 06 C1 xxx D2	75	90	50	60
DB 12 C2 xxx D2	150	180	100	120
Image size	Configurable from approx. 1.5 kB to 20 kB			
IPS PAL per channel	0,5; 1; 2; 3; 4; 5; 6; 8; 12,5; 25			
IPS NTSC per channel	0,5; 1; 2; 3; 5; 6; 7,5; 10; 15; 30			
Audio Inputs	2 (DB 06) or 4 (DB 12), cinch connector, line in signal, 16 KHz sampling rate			
Audio Outputs	1, line out signal, 1/8" mini-plug (3,5 mm)			
Alarm Inputs (NO / NC)	12 Switching voltage (high): >2 VDC Switching voltage (low): <0,5 VDC Input voltage: max. 40 VDC Impedance: 22 kOhm pull up (+5 V)			
Malfunction relay output	1 Voltage range: 30 VAC - 40 VDC Switching current: max. 500 mA AC or DC Switching power: max. 10 VA			
Relay Outputs (NO / NC)	12 Voltage range: 30 VAC - 40 VDC Switching current: max. 500 mA AC or DC Switching power: max. 10 VA			
Spot monitor output	2 CVBS outputs for full screen or sequences from connected analog cameras			
Bilinx control	For AutoDome control and Dinion camera configuration via coax			
PTZ control	Bilinx: Via coax cable, up to 12 AutoDome units. Biphase: Up to 12 AutoDome units. RS 232: Protocols from Bosch, Panasonic, Pelco (D-Protocol), JVC, SAE are supported. RS 232: Via Console Port of any Allegiant matrix.			
Storage capacity (internal hard disk)	120 GB, 250 GB, 400 GB (8 GB are needed for the operating system and video system software)			
Video output	1x VGA			
Ethernet	10/100/1000Base-T, bandwidth-limited			
CPU	Intel Celeron® (min. 2,8 GHz)			
RAM	512 MB			
RS 232	1			
USB 2.0	6			

CD-RW or DVD-RW	Included (DVD-RW not in DB 06 C1 012 DL2 and DB 06 C1 012 D2)
Power supply	100 / 240 VAC, 50 / 60 Hz (auto switch)
Typical power consumption	approx. 120 W
Power consumption	max. 140 W
Operating system	Microsoft Windows® XP Embedded
Web Browser	Microsoft Internet Explorer 6 or higher, on Windows 2000 or Windows® XP
Export of video/audio datas	DiBos-format or ASF-format on DVD-RW, USB-device or network drive
Image Printer	via USB (with Windows XP drivers)

Mechanical facilities

Dimensions (H x W x D)	11.5 x 48.0 x 43 cm (4.5 x 19 x 16,9 inch), also in 19 inch rack mountable
Weight	Approx. 11.5 kg (25 lb), dependent on model

Environmental conditions

Operating temperature	+5 °C to +40 °C (41 °F to 104 °F)
Storage temperature	-10 °C to +60 °C (-14 °F to 140 °F)
Relative humidity in operation	15% to 80%, no condensation
Relative humidity when stored	8% to 80%, no condensation

Electromagnetic Compatibility (EMC)

• USA	FCC Part 15, Class B
• EU	EMC Directive 89/336/EEC Interference immunity: Conformance with EN 50130-4 requires an external UPS. The product is tested according to EN 50130-4, with the exception of voltage interruption to EN 50130-4:1995 Chapter 3/8/04. To comply with EN 50130-4, an external UPS is required. The UPS (Pulsar ellipse 500) is not included in the product and must be ordered separately. The UPS should be dimensioned for at least 480 VA. Interference emission: EN 55022, Class B Mains power fluctuations: EN 61000-3-2 Voltage fluctuations: EN 61000-3-3

Safety

• USA	UL60950 Third edition (2000) CAN/CSA 22.2 No.60950-00, Third edition (2000)
• EU	EN 60950: 2000
Warranty	3 years
Approved anti virus software	Norton Anti Virus McAfee Virus Scan Trend Micro

Hardware and Software options

DiBos Micro software receiver/IP recorder:

(for alarm image streams via network and/or ISDN and / or PSTN)

DB SR 002	DiBos Micro software receiver, no network camera/network video encoder can be connected
DB SR 162	DiBos Micro software receiver/IP recorder, up to 16 network cameras/network video encoders can be connected
DB SR 322	DiBos Micro software receiver/IP recorder, up to 32 network cameras/network video encoders can be connecte

Requirements for computer with DiBos Micro receiver software/IP recorder:

Operating system	Windows XP Professional
CPU	2 GHz or more, Pentium® 4
RAM	512 MB
VGA card	1024 x 768, 32-Bit color depth
USB-connector	for dongle

Country kits

(All versions include manuals, keyboard and mouse)

DB EK 012 DA	Danish version
DB EK 012 DE	German version
DB EK 012 EN	English version
DB EK 012 ES	Spanish version
DB EK 012 FI	Finnish version
DB EK 012 FR	French version
DB EK 012 IT	Italian version
DB EK 012 NL	Dutch version
DB EK 012 NO	Norwegian version
DB EK 012 PT	Portuguese version
DB EK 012 SV	Swedish version

External hard disk expansion

(For further information please contact Bosch Security Systems)

DB EK 021	SCSI-adaptor for external hard disk drive array. Supports various Bosch disk arrays up to 16 TB (only for DB 06, due to required PCI slot)
-----------	--

Interface Extension for Automated Teller Machines (ATM)

(For further information please contact Bosch Security Systems)

DB SE 013	Up to 4 ATM
DB SE 014	Up to 2 ATM

Windows® and Windows® XP, are registered trademarks of Microsoft Corporation.

Intel Pentium® and Celeron® are registered trademarks of Intel Corporation.

Ordering Information

Model | Description

DB 06 C1 012 DL2 DiBos Digital Video Recorder	6 channel DiBos Micro with 120 GB HDD, CD-RW, no IP devices.
DB 06 C1 012 D2 DiBos Digital Video Recorder	6 channel DiBos Micro with 120 GB HDD, CD-RW, 8 IP devices.
DB 06 C1 025 D2 DiBos Digital Video Recorder	6 channel DiBos Micro with 250 GB HDD, DVD-RW, 8 IP devices.
DB 06 C1 040 D2 DiBos Digital Video Recorder	6 channel DiBos Micro with 400 GB HDD, DVD-RW, 8 IP devices.
DB 12 C2 025 D2 DiBos Digital Video Recorder	12 channel DiBos Micro with 250 GB HDD, DVD-RW, 8 IP devices.

Ordering Information

Model | Description

DB 12 C2 040 D2 DiBos Digital Video Recorder
12 channel DiBos Micro with 400 GB HDD, DVD-RW, 8 IP devices.

Hardware Accessories

DB EK 012 DA English Keyboard and Danish Manuals

DB EK 012 DE German Keyboard and Manuals

DB EK 012 EN English Keyboard and Manuals

DB EK 012 ES English Keyboard and Spanish Manuals

DB EK 012 FI English Keyboard and Finnish Manuals

DB EK 012 FR English Keyboard and French Manuals

DB EK 012 IT English Keyboard and Italian Manuals

DB EK 012 NL English Keyboard and Dutch Manuals

DB EK 012 NO English Keyboard and Norwegian Manuals

DB EK 012 PT English Keyboard and Portuguese Manuals

DB EK 012 SV English Keyboard and Swedish Manuals

DB EK 021 SCSI Card Adapter and SCSI Cable

Built in the factory. Included SCSI cable. DiBos Micro: Only for DB 06, due to required PCI slot. DiBos 19 inch: Not for DB 30 C5 100 R2 and DB 30 C5 160 R2, due to required PCI slot.

DB EK 061 SCSI Card Adapter and SCSI Cable

Expansion. Included SCSI cable. DiBos Micro: Only for DB 06, due to required PCI slot. DiBos 19 inch: Not for DB 30 C5 100 R2 and DB 30 C5 160 R2, due to required PCI slot.

DB SE 013 ATM Kit up to 4 ATM

Up to 4 ATM. Included ATM interface box DTP3, connection cable DiBos - DTP3, software unlock of 4 ATM and 4 foyer card readers and bank code lock. Consult your local Bosch Security Systems Sales office for further information concerning ATM protocols.

DB SE 014 ATM Kit up to 2 ATM

Up to 2 ATM. Included ATM interface box DTP3, connection cable DiBos - DTP3, software unlock of 2 ATM and 4 foyer card readers and bank code lock. Consult your local Bosch Security Systems Sales office for further information concerning ATM protocols.

DB EK 016 DO ATM Upgrade Kit for DTP3

Expansion from 2 ATM to 4 ATM.

DB EK 711 ISDN Package

Requires one free PCI slot.

DB SE 041 Tele Service Package for DiBos

PC Anyware Host Version 10.5

DB EK 831 OVS Interface Converter (OVS)

RS 485/RS 232 interface converter.

DB EK 823 9M Connection Cable 9-pole, between DTP3 and OVS

DB EK 721 RS 232 PCI Interface Expansion for RS 232

PCI card for 2x RS 232. Requires one free PCI slot.

DB EK 211 DCF Radio Clock Receiver DCF-77

Requires one free RS 232 interface.

DB EK 211 DCFC Extension Cable 50 m for DCF-77

DB EK 201 UPS Uninterruptable Power Supply UPS

Ordering Information

Model | Description

Software Options

DB SE 031 Software Interface to Bosch Alarm Panels

Connection via RS 232 to 9000 Series (Radionics), UGM 2020, UEZ 2000/1000, BZ 500, NZ/BZ 1060, NZ/BZ 1012, NZ 1008.

DB SR 002 Receiver Software

DiBos receiver software for Win XP PC. Includes USB dongle. No recording of IP cameras.

DB SR 162 Receiver Software/IP Recorder

DiBos receiver software for Win XP PC. Includes USB dongle. Recording up to 16 cameras.

DB SR 322 Receiver Software/IP Recorder

DiBos receiver software for Win XP PC. Includes USB dongle. Recording up to 32 cameras.

Americas:

Bosch Security Systems
130 Perinton Parkway
Fairport, New York, 14450, USA
Phone: +1 585 223 4060
Fax: +1 800 289 0096
security.sales@us.bosch.com
www.boschsecurity.us

Europe, Middle East, Africa:

Bosch Security Systems B.V.
P.O. Box 80002
5600 JB Eindhoven, The Netherlands
Phone: +31 40 27 83955
Fax: +31 40 27 86668
emea.securitysystems@bosch.com
www.boschsecurity.com

Asia-Pacific:

Bosch Security Systems Pte Ltd
38C Jalan Pemimpin
Singapore 577180
Phone: +65 6319 3450
Fax: +65 6319 3499
apr.securitysystems@bosch.com
www.boschsecurity.com

Represented by