

# Pole Mounting Bracket



ACCESSORIES

## H4-MT-POLE1

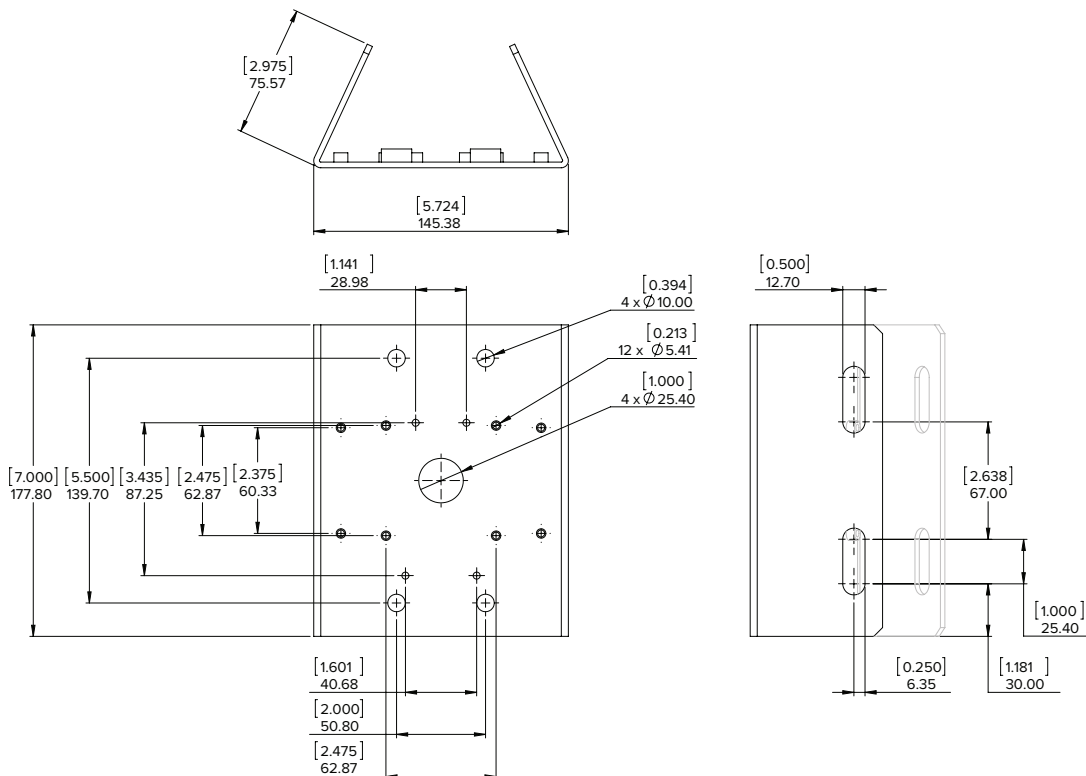
Aluminum pole mounting bracket for H4A-DP dome cameras using the pendant wall mount and H4A-BO-IR Bullet Cameras

Weight: 0.458 kg (1.01 lbs)

- Female inserts
- Compatible with:
  - Pendant Wall Mount (H4A-MT-WALL1)
  - HD Bullet Cameras (H4A-BO-IR)
  - HD Bullet Camera Junction Box (H4-BO-JBOX1)
- 6"–20" Metal straps included
- Minimum pole diameter is 152.4 mm (6")
- Maximum pole diameter is 508 mm (20")
- RAL 9003

### Included components for Avigilon camera and accessories:

- 4 x Hex head bolts (3/8" – 16 x 1")
- 4 x Lock washers (3/8")
- 4 x Flat washers (3/8")
- 4 x Hex head bolts (M4-0.7 x 30)
- 4 x Lock washers (M4)
- 4 x Flat washers (M4)
- 2 x 6" – 20" Metal straps



[X.X]	INCHES
X	MM

SUPPORT 1.888.281.5182 | sales@avigilon.com | avigilon.com