

## POE-5010HD

### POE 5 Mega-Pixel Box Type IP Camera with ICR

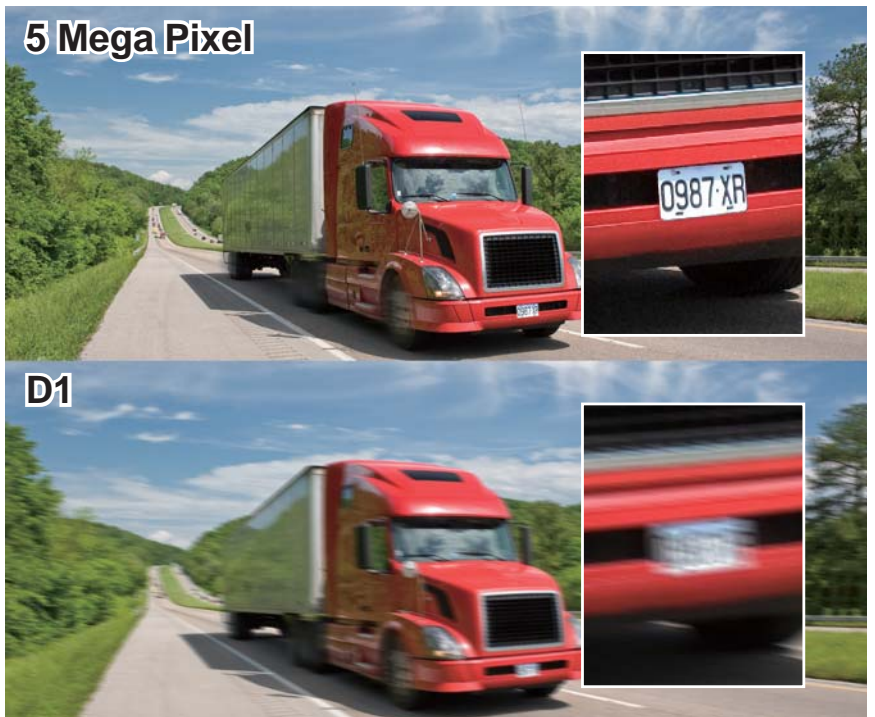
The POE-5010HD is the first 5 MegaPixel box type IP Camera from AirLive, it is designed for delivering high definition video stream across your local area Network. 5MP resolution provides a forensic level of video quality, and fits for application which more detailed information is needed, such as the surveillance system of station, campus and hospital.

The POE-5010HD equips with a built-in removable IR-Cut and hence suites for Day/Night use. C/CS mount lens and DC-Iris supported extends its usage in most locations, whether the light source in that location is stable or not. Put the POE-5010HD into an IP66 enclosure with additional IR LED, it can also be used in outdoor environment. Moreover, the POE-5010HD also supports SD/SDHC slot for additional local storage; the DI/DO plug for integrating with external sensor and alarm.

Adopting H.264 as one of its video compression method, POE-5010HD supplies an efficient way to save the network bandwidth and storage space. With all those features above, POE-5010HD is the best choose for small to large IP surveillance system.

### 5 Mega-Pixel Video Resolution

Compare to lower resolution CCTV camera, POE-5010HD can give you more detailed information per-frame. The 5 Mega-Pixel progressive scan CMOS sensor can capture sharper image than the older sensor can do. The POE-5010HD also can work in 3 Megapixel, 2 Megapixel, and megapixel resolutions. POE-5010HD is an ideal choose for many kinds of critical application, such as face or foreign object detection.



Manufacturer

**OvisLink Corp.**

5F, No.96, Min-Chuan Rd., Hsin-Tien Dist., New Taipei City 231, TAIWAN

[www.airlive.com](http://www.airlive.com)



## Changeable Lens and Auto-Iris Support

POE-5010HD can support C/CS mount, Auto-Iris Lens. This is very useful for the location where the light source is changing by time. For the Auto-Iris lens will adjust its aperture and hence improve the image quality to avoid over exposure. C/CS mount is very popular lens adapter standards in the main market; installers can select a proper lens for different purpose. For example, if he needs a wilder angle of view, he can choose a lens with shorter focus and vice versa.



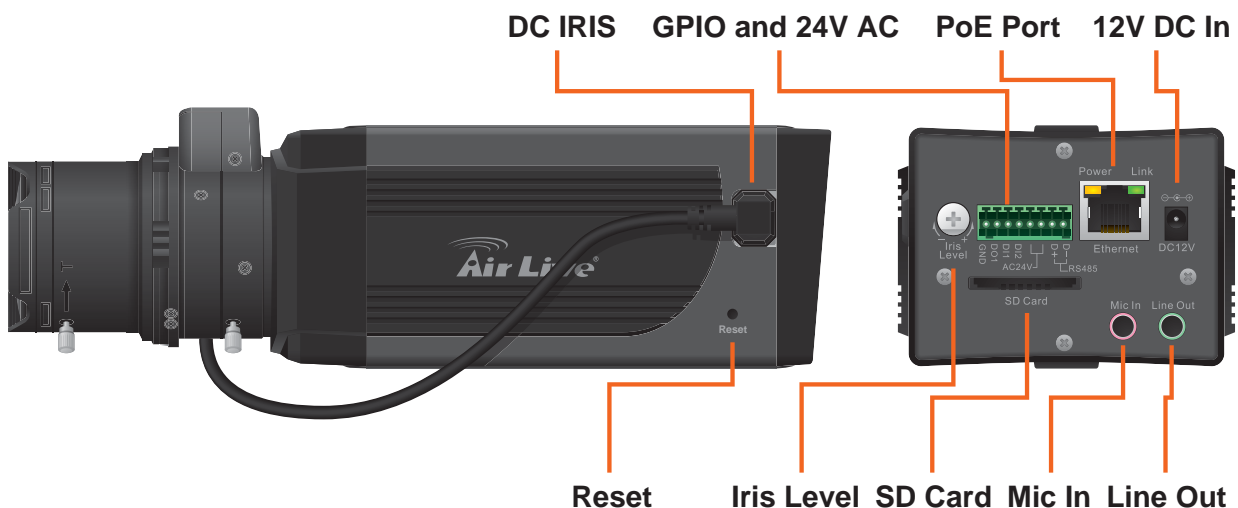
## Low LUX Illumination and IR-Cut Removable (ICR)

IR-CUT Removable is a gear which will adjust the IR filter for adapting the light condition in the environment. In day time, the filter will filter out unnecessary infrared light for keeping the accurate color of the image. In night mode, the filter will be removed and hence makes the sensor to capture more light for imaging. With additional IR LED spot light and enclosure, POE-5010HD can be used outdoor for city or street surveillance project

**Note: The enclosure is not included in the package, it should be purchased separately.**

## Diverse of Interface for Integrating

POE-5010HD supports SD/SDHC card for local storage. It also support DI/DO for further integrating with additional sensor and alarm. Connect the POE-5010HD with the external microphone and speaker; it can perform the two-way audio function.





## CamPro Professional, CamPro Express 64 and ONVIF Support

The CamPro Professional is AirLive's intelligent video surveillance recording software which is designed to meet most demands for professional installations. The Professional version greatly enhances the video analysis functions that can be applied to diverse surveillance scenarios. What's more, the POE-5010HD also supports ONVIF standard for ensure the cooperation between POE-5010HD and other well-known CMS in the main market.

## Optional High Mega Pixel LENSs

AirLive, the leading IP camera manufacturer, has launched high quality Mega-Pixel lenses. ACC-MPL-4mm is a Mega-Pixel CS mount lens, and suites for general daily usage. ACC-MPL- 2812V F, ACC-MPL-1250VF and ACC-MPL-550VF are vari-focal lenses with Auto Iris. The advantage of a varifocal lens is that its focal length and field of view (FOV) can be change manually and hence can be used more flexibly. The focal length of ACC-MPL- 2812VF is from 2.8 to 12mm (4X). You can apply its wide end FOV in locations where an overlook is needed, such as entrance, hall way, or parking lot. And you can use its tele end for some critical areas like paying-counter. The ACC-MPL-1250VF and ACC-MPL-550VF can be used in most of projects.

With POE-100HD-ICR and POE-5010HD, AirLive Mega-Pixel lens can provide you a high quality video no matter in day time or night time. The Auto-Iris functional can automatically adjust the aperture of the lens and give you a stable image in an outdoor environment with changing light source.



## APPS for Android and iOS

AirLive has worked with IPCAM Viewer developer to add support for AirLive IPCAM. So you can view multiple AirLive cameras using Android device, iPhone, or iPad. For more information about Android or iOS apps, please visit the FAQ page.

## Support WDR

When strong back light is surrounding a subject, camera with wide dynamic range technology can adjust the intense backlight and dark area to balance the whole screen; therefore, user can recognize the details in the bright and dark area.



### Specifications

#### Camera

##### Image Sensor

- 1/2.5" 5 Mega Pixel Color CMOS Sensor

##### Sensor Resolution

- 2592 x 1944

##### Minimum Illumination

- 0.5 LUX

##### Lens Type

- C/CS Mount Lens Support

##### Auto Iris

- DC-Iris Support

##### Night Vision

- Built-In Removable IR Cut Filter

#### Video

##### Compression

- H.264 High/Main/Baseline Profile, MPEG4 Simple Profile and MJPEG

##### Auto Exposure Control

- Yes

##### Auto White Balance

- Yes

##### Auto Gain Control

- Yes

##### BLC

- Yes

##### OSD

- Text and Date-Time

##### Resolution and Frame Rate

- 2592 X 1920 @ 8 fps  
- 2048 x 1536 @ 15 fps  
- 1920 x1080 @ 20 fps  
- 1280 x960 @ 30 fps  
- 1280 x 720 @ 30 fps  
- 720 x 480 @ 30 fps  
- 640 x 480 @ 30 fps  
- 320 x 240 @ 30 fps  
- 176 x 144 @ 30 fps

##### Multi-Stream

- H.264, MPEG-4 and MJPEG

## Audio (Two-way)

### Audio In

- Internal Omni-Directional Microphone
- External Mic. In

### Audio Out

- Line Level Out ; 3.5mm Phone Jack; Mono

### Audio Codec

- G.711/AMR

## Communication

### Ethernet

- One RJ45 Port; IEEE 802.3u Compliant 10/100 Mbps Fast Ethernet with Auto-MDIX

### PoE

- IEEE802.3af

### Supported Protocols

- TCP/IP, UDP, ICMP, DHCP, NTP, DNS, DDNS, SMTP, FTP, HTTP, HTTPS, Samba, PPPoE, UPnP, Bonjour, RTP, RTSP and RTCP

## LED and Button

### Power LED

- Amber Color

### Link/Act. LED

- Green Color

### Reset Button

- Reboot and Factory Default (Push and Hold Over 5 Sec)

## Ordering Information:

<b>AirLive POE-5010HD</b>	POE 5 Mega-Pixel Box Type IP Camera with ICR, no Lens
<b>AirLive POE-5010HD-4mm</b>	POE-5010HD with 4mm, Mega-Pixel Lens
<b>AirLive POE-5010HD-2812VF</b>	POE-5010HD with Varifocal, 2.8~12mm, Auto-Iris, Mega-Pixel Lens
<b>AirLive POE-5010HD-550VF</b>	POE-5010HD with Varifocal, 5~50mm, Auto-Iris, Mega-Pixel Lens (Lens not for IR operation)
<b>AirLive POE-5010HD-1250VF</b>	POE-5010HD with Varifocal, 12.5~50mm, Auto-Iris Mega-Pixel Lens

## Others

### SD Slot

- SD/SDHC Card Support

### DI/DO

- Yes

## System

### Network Processor

- DSP Base

### System ROM

- 32MByte NAND Flash

### System RAM

- 128Mbyte DDR SDRAM

### Power

- DC12V /AC24V

### Power Consumption

- 8 Watts Max.

### Environment

- Operation: Temp: 0°C ~ 50°C Humidity: 20% ~ 85% non-condensing
- Storage: Temp: -15°C ~ 60°C Humidity: 0% ~ 90% non-condensing

### Approvals

- FCC/CE Class B